

**PERSONS NOT IN THE
LABOUR FORCE**

AUSTRALIA

EMBARGO: 11.30AM (CANBERRA TIME) TUES 27 MAR 2007

C O N T E N T S

	<i>page</i>
Notes	2
Conceptual framework	3
Summary of findings	4

T A B L E S

List of tables	6
Civilian population	7
Persons not in the labour force	9
Persons not in the labour force, with marginal attachment	10
Persons not in the labour force, discouraged job seekers	17
Persons not in the labour force, without marginal attachment	18
Persons not in the labour force, due to caring for children	21
Persons not in the labour force, last job less than 20 years ago	22
Populations	25

A D D I T I O N A L I N F O R M A T I O N

Explanatory notes	28
Appendix 1: Populations and data items list	32
Appendix 2: Supplementary surveys	37
Technical note	38
Glossary	41

I N Q U I R I E S

For further information about these and related statistics, contact the National Information and Referral Service on 1300 135 070 or Labour Market Section on Canberra (02) 6252 7206.

NOTES

ABOUT THIS PUBLICATION

This publication presents information about people aged 15 years and over who are not in the labour force: that is, neither employed nor unemployed. The data measure the potential supply of labour not reflected in employment and unemployment statistics.

Statistics in this publication were obtained from the Persons Not in the Labour Force Survey, conducted throughout Australia in September 2006 as a supplement to the Australian Bureau of Statistics (ABS) monthly Labour Force Survey (LFS).

This survey provides information about people aged 15 years and over who were not in the labour force. The survey collected details about whether they wanted to work, reasons why they were not actively looking for work, their availability for work, and their main activity while not in the labour force.

Many people not in the labour force could be considered to have some attachment to the labour force. For example they may want a job, but for a variety of reasons are not actively looking for work or are not currently available to start a job. There is an expectation that many of these people will move into the labour force in the short term, or could do so if labour market conditions changed.

NOTES ABOUT THE ESTIMATES

From 2006, occupation data are classified according to the *ANZSCO–Australian and New Zealand Standard Classification of Occupations, First Edition, 2006* (cat. no. 1220.0). The new classification replaces the *ASCO–Australian Standard Classification of Occupations, Second Edition, 1997* (cat. no. 1220.0).

ROUNDING

As estimates have been rounded, discrepancies may occur between sums of the component items and totals.



ABBREVIATIONS

ABS	Australian Bureau of Statistics
ANZSCO	Australian and New Zealand Standard Classification of Occupations
ASCO	Australian Standard Classification of Occupations
CAI	computer assisted interviewing
ILO	International Labour Organization
LFS	Labour Force Survey
RSE	relative standard error
SACC	Standard Australian Classification of Countries
SE	standard error

Brian Pink
Australian Statistician

CONCEPTUAL FRAMEWORK

PERSONS NOT IN THE LABOUR FORCE AGED 15 YEARS AND OVER

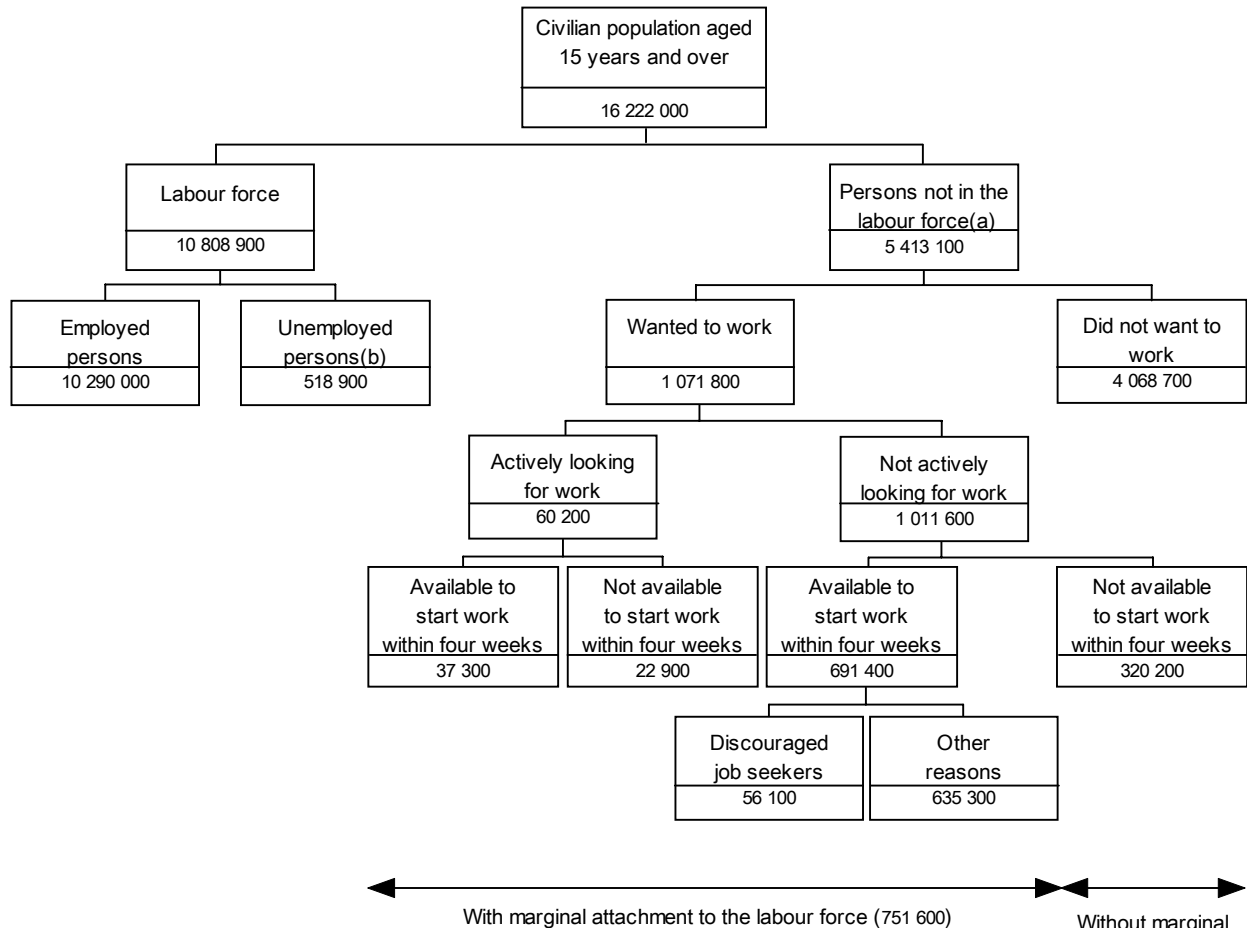
Persons not in the labour force can be divided into those who are marginally attached to the labour force, and those who are not. Persons who are marginally attached to the labour force may satisfy some, but not all, of the criteria required to be classified as unemployed.

Persons not in the labour force are considered to be marginally attached to the labour force if they:

- want to work and are actively looking for work but are not available to start work in the reference week, or
- want to work and are not actively looking for work but are available to start work within four weeks.

Persons not in the labour force are not marginally attached to the labour force if they:

- do not want to work, or
- want to work but are not actively looking for work and are not available to start work within four weeks.



← With marginal attachment to the labour force (751 600)

→ Without marginal attachment to the labour force (4 661 500)(a)

(a) Includes 272 600 people who were permanently unable to work.

(b) Includes future starters.

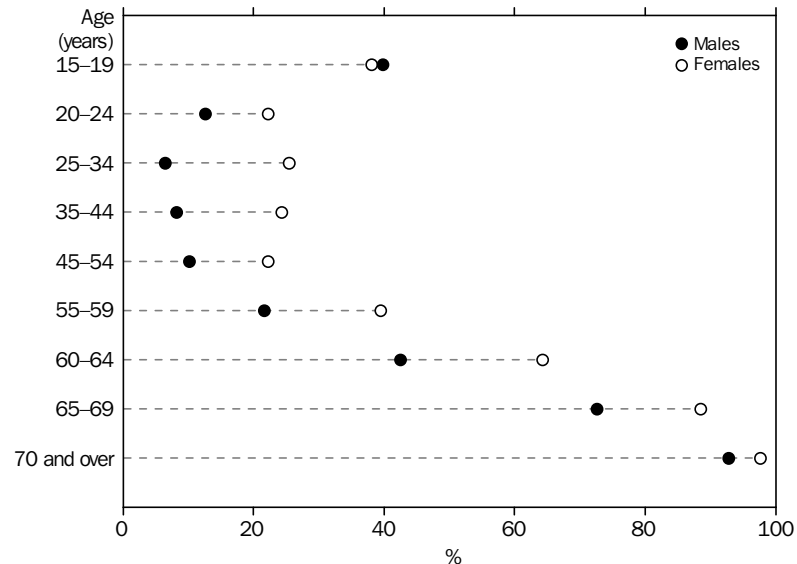
SUMMARY OF FINDINGS

OVERVIEW

In September 2006, there were 5,413,100 people aged 15 years and over who were not in the labour force. This represented 33% of the civilian population aged 15 years and over. One-fifth (20%) of persons not in the labour force wanted to work and 61% of persons not in the labour force were women.

The proportion of people who were not in the labour force varied according to age. In the 15–19 years age group, where there are high levels of participation in education, the proportion was 40% for men and 38% for women. In all other age groups, there was a higher proportion of women than men not in the labour force. The proportion of men not in the labour force was lower for those aged 25–34 years (6.5%) than for those aged 45–54 years (10%), 55–59 years (22%), 60–64 years (43%) and 70 years and over (93%). The proportion of women not in the labour force was lower for those aged 45–54 years (22%) than for those aged 25–34 years (26%) and higher for those aged 55–59 years (39%), 60–64 years (64%) and 70 years and over (98%).

PERSONS NOT IN THE LABOUR FORCE, PROPORTION OF THE CIVILIAN POPULATION



MARGINAL ATTACHMENT

Of the 751,600 people with marginal attachment to the labour force in September 2006, 691,400 or 92% were not actively looking for work but were available to start work within four weeks. The remainder were actively looking for work but were not available to start work in the reference week.

Some 15% of women and 12% of men not in the labour force were marginally attached to the labour force. Of women with marginal attachment to the labour force, 70% would have preferred part-time work, while 16% preferred full-time work. For men, 51% preferred part-time work and 35% preferred full-time work. The remainder had no preference, or were undecided.

Approximately 59% of people with marginal attachment to the labour force 'intended to enter' the labour force within 12 months, 19% 'might enter' the labour force within 12 months, and 18% 'did not intend to enter' the labour force within 12 months.

SUMMARY OF FINDINGS *continued*

MARGINAL ATTACHMENT

continued

Of those with marginal attachment to the labour force, 79% previously had a job. Of those who previously had a job, 33% stated that their last job was less than 12 months ago, and 21% reported their last job was between 1 year and 3 years ago.

For people with marginal attachment to the labour force the most common main activities since last job were 'home duties or caring for children' (16% of men, 62% of women) and 'attending an educational institution' (40% of men, 21% of women).

Main reason for not actively looking for work

The main reasons for not actively looking for work most commonly reported by men were 'attending an educational institution' (33%) and 'own ill health or physical disability' (20%). The most commonly reported main reasons for not actively looking for work for women were 'caring for children' (28%) and 'attending an educational institution' (17%).

Discouraged job seekers

At September 2006 there were 56,100 discouraged job seekers aged 15 years and over. This is an 11% decline in the number of discouraged job seekers aged 15 years and over from September 2005 (63,100). The number of men who were discouraged job seekers declined by 18% from 2005 to 2006, whereas for women the decline was 6.3%.

Some of the characteristics of discouraged job seekers aged 15 years and over in September 2006 included:

- 64% were women
- 39% of men and 15% of women had looked for work in the previous 12 weeks
- 74% of men and 56% of women intended to enter the labour force in the next 12 months
- 82% had worked before
- 30% of men and 16% of women had worked in the last 12 months.

The main reasons most commonly reported by discouraged job seekers for not actively looking for work were 'considered too old by employers' (37%), 'no jobs in locality or line of work' (27%) and 'lacked necessary training, skills or experience' (21%). 'Considered too old by employers' was reported as the main reason by 43% of men compared with 33% of women. For women, 28% reported the main reason as 'no jobs in locality or line of work' and 24% as 'lacked necessary schooling, training, skills or experience'.

PEOPLE WITHOUT MARGINAL ATTACHMENT

Of the 4,661,500 people aged 15 years and over who were without marginal attachment to the labour force in September 2006, the majority (87%) were people who did not want to work, while a further 5.8% were permanently unable to work. Of those people who did not want to work, 40% (33% of women, 51% of men) reported their main activity as 'retired or voluntarily inactive', 28% (40% of women, 7.5% of men) as 'home duties or caring for children', and 12% (10% of women, 15% of men) as 'attending an educational institution'.

There were 320,200 people who wanted to work but were neither actively looking for work nor available to start work within four weeks. Of these, 67% were women, 29% had a job less than 12 months ago, 45% reported their main activity as 'home duties or caring for children' and 27% as 'attending an educational institution'.

LIST OF TABLES

page

CIVILIAN POPULATION

- 1** Labour force status of people aged 15 to 69 years, September 2000 to September 2006, by sex 7
- 2** Labour force status of people aged 15 years and over, September 2005 to September 2006, by sex 8

PERSONS NOT IN THE LABOUR FORCE

- 3** Main activity when not in the labour force, by age group, by sex 9

WITH MARGINAL ATTACHMENT TO THE LABOUR FORCE

- 4** State or territory of usual residence, age group, relationship in household and country of birth, by whether actively looking and available, by sex 10
- 5** Time since last job and main activity when not in the labour force, by whether actively looking and available, by sex 13
- 6** Sex, whether wanted to work and were actively looking, wanted to work but were not actively looking for work and were available to start work within four weeks with main reason not actively looking, by intention to enter the labour force in the next 12 months and preference for full-time or part-time work 15
- 7** Main reason for not actively looking for work, by age group and sex 16

DISCOURAGED JOB SEEKERS

- 8** Age group, whether looked for work in the last 12 months, intention to enter the labour force in the next 12 months and time since last job, by sex 17

WITHOUT MARGINAL ATTACHMENT TO THE LABOUR FORCE

- 9** State or territory of usual residence, age group, relationship in household, country of birth, time since last job and main activity, by whether wanted to work, by sex 18

DUE TO CARING FOR CHILDREN

- 10** Age group, age of youngest child, relationship in household and country of birth, by whether available for work, by sex 21

LAST JOB LESS THAN 20 YEARS AGO

- 11** Reason for ceasing last job, occupation in last job, whether looked for work in the last 12 months and time since last job by status in employment and full-time or part-time status in last job, by sex 22

POPULATIONS

- 12** State or territory of usual residence, by sex 25

	Sep 2000	Sep 2001	Sep 2002	Sep 2003	Sep 2004	Sep 2005	Sep 2006
	'000	'000	'000	'000	'000	'000	'000
MALES							
Civilian population aged 15 to 69 years	6 711.1	6 791.8	6 901.2	6 993.4	6 989.9	7 142.2	7 218.9
Persons in the labour force	5 424.7	5 461.5	5 514.0	5 594.4	5 631.6	5 753.0	5 857.5
Employed	5 054.9	5 067.7	5 160.6	5 275.2	5 321.1	5 457.9	5 574.5
Unemployed	369.8	393.8	353.4	319.2	310.5	295.1	283.0
Persons not in the labour force	1 286.4	1 330.3	1 387.1	1 399.0	1 358.3	1 389.1	1 361.4
With marginal attachment to the labour force	255.1	259.7	263.0	262.7	269.5	268.3	246.4
Wanted to work and were actively looking for work	28.6	31.3	30.0	28.8	28.9	28.3	25.5
Were available to start work within four weeks	21.6	21.5	20.9	17.1	20.4	21.3	15.4
Were not available to start work within four weeks	7.1	9.8	9.2	11.7	8.6	7.0	10.1
Wanted to work but were not actively looking for work and were available to start work within four weeks	226.4	228.4	232.9	233.9	240.6	240.0	220.8
Discouraged job seekers	32.4	28.3	24.4	26.6	28.4	21.8	18.9
Other	194.0	200.1	208.5	207.3	212.2	218.2	202.0
Without marginal attachment to the labour force(b)	1 031.4	1 070.6	1 124.2	1 136.4	1 088.9	1 120.8	1 115.0
Wanted to work but were not actively looking for work and were not available to start work within four weeks	118.8	111.2	129.6	123.1	120.4	99.0	105.2
Did not want to work	837.9	843.5	894.0	881.7	857.8	884.5	858.7
FEMALES							
Civilian population aged 15 to 69 years	6 687.7	6 763.9	6 866.9	6 972.6	7 081.4	7 168.7	7 248.2
Persons in the labour force	4 289.5	4 329.0	4 427.2	4 509.0	4 600.5	4 745.9	4 872.7
Employed	4 027.9	4 055.3	4 154.8	4 242.1	4 348.5	4 496.0	4 637.5
Unemployed	261.7	273.6	272.4	266.9	252.0	249.9	235.2
Persons not in the labour force	2 398.2	2 434.9	2 439.7	2 463.5	2 480.8	2 422.8	2 375.5
With marginal attachment to the labour force	568.8	556.8	545.2	572.0	585.8	562.8	497.5
Wanted to work and were actively looking for work	28.2	34.1	36.0	30.4	36.5	40.9	34.7
Were available to start work within four weeks	20.4	23.6	23.0	22.3	26.3	29.7	21.9
Were not available to start work within four weeks	7.8	10.5	13.0	8.1	10.2	11.1	12.8
Wanted to work but were not actively looking for work and were available to start work within four weeks	540.6	522.7	509.2	541.6	549.3	521.9	462.8
Discouraged job seekers	74.1	53.3	53.6	53.2	53.6	37.5	34.0
Other	466.6	469.4	455.6	488.4	495.8	484.4	428.8
Without marginal attachment to the labour force(b)	1 829.4	1 878.1	1 894.6	1 891.6	1 895.0	1 860.0	1 878.0
Wanted to work but were not actively looking for work and were not available to start work within four weeks	216.6	202.5	231.6	255.3	213.0	223.9	214.4
Did not want to work	1 570.6	1 615.5	1 607.2	1 567.9	1 618.3	1 547.0	1 565.6
PERSONS							
Civilian population aged 15 to 69 years	13 398.9	13 555.7	13 768.1	13 966.0	14 071.3	14 310.8	14 467.1
Persons in the labour force	9 714.2	9 790.4	9 941.2	10 103.4	10 232.1	10 498.9	10 730.2
Employed	9 082.8	9 123.0	9 315.4	9 517.3	9 669.6	9 953.9	10 212.0
Unemployed	631.4	667.5	625.8	586.1	562.5	545.0	518.3
Persons not in the labour force	3 684.6	3 765.2	3 826.8	3 862.6	3 839.2	3 811.9	3 736.9
With marginal attachment to the labour force	823.9	816.5	808.1	834.6	855.3	831.1	743.9
Wanted to work and were actively looking for work	56.8	65.4	66.0	59.2	65.4	69.2	60.2
Were available to start work within four weeks	42.0	45.1	43.9	39.4	46.6	51.0	37.3
Were not available to start work within four weeks	14.8	20.3	22.1	19.8	18.8	18.1	22.9
Wanted to work but were not actively looking for work and were available to start work within four weeks	767.1	751.1	742.1	775.5	789.9	761.9	683.6
Discouraged job seekers	106.5	81.7	78.0	79.8	82.0	59.3	52.9
Other	660.6	669.5	664.1	695.7	707.9	702.6	630.8
Without marginal attachment to the labour force(b)	2 860.7	2 948.7	3 018.7	3 028.0	2 983.9	2 980.9	2 993.0
Wanted to work but were not actively looking for work and were not available to start work within four weeks	335.5	313.7	361.2	378.4	333.4	322.9	319.7
Did not want to work	2 408.5	2 458.9	2 501.2	2 449.6	2 476.1	2 431.6	2 424.3

(a) For information on comparability between years, see paragraphs 16, 17 and 18 of the Explanatory Notes.

(b) Includes people who were permanently unable to work.

	SEPTEMBER 2005			SEPTEMBER 2006		
	<i>Males</i>	<i>Females</i>	<i>Persons</i>	<i>Males</i>	<i>Females</i>	<i>Persons</i>
	'000	'000	'000	'000	'000	'000
Civilian population aged 15 years and over	7 908.3	8 115.2	16 023.5	8 005.2	8 216.8	16 222.0
Persons in the labour force	5 805.3	4 764.7	10 570.0	5 913.8	4 895.0	10 808.9
Employed	5 510.2	4 514.9	10 025.0	5 630.2	4 659.8	10 290.0
Unemployed	295.1	249.9	545.0	283.7	235.2	518.9
Persons not in the labour force	2 103.0	3 350.5	5 453.5	2 091.3	3 321.8	5 413.1
With marginal attachment to the labour force	273.8	566.5	840.3	250.5	501.1	751.6
Wanted to work and were actively looking for work	28.3	40.9	69.2	25.5	34.7	60.2
Were available to start work within four weeks	21.3	29.7	51.0	15.4	21.9	37.3
Were not available to start work within four weeks	7.0	11.1	18.1	10.1	12.8	22.9
Wanted to work but were not actively looking for work and were available to start work within four weeks	245.4	525.7	771.1	225.0	466.4	691.4
Discouraged job seekers	25.0	38.2	63.1	20.4	35.8	56.1
Other	220.5	487.5	708.0	204.6	430.7	635.3
Without marginal attachment to the labour force(b)	1 829.2	2 784.0	4 613.2	1 840.8	2 820.7	4 661.5
Wanted to work but were not actively looking for work and were not available to start work within four weeks	100.0	225.0	325.0	105.4	214.8	320.2
Did not want to work	1 579.1	2 458.4	4 037.5	1 571.2	2 497.4	4 068.7

(a) From September 2005, the scope of this survey changed to include all people aged 15 years and over. See paragraph 17 of the Explanatory Notes for more information.

(b) Includes people who were permanently unable to work.

PERSONS NOT IN THE LABOUR FORCE, Main activity when not in the labour force

AGE GROUP (YEARS)

	15-24	25-34	35-44	45-54	55-59	60-64	65-69	70 and over	Total
	'000	'000	'000	'000	'000	'000	'000	'000	'000

MALES

Retired or voluntarily inactive	*1.6	*2.0	*4.7	13.2	43.1	89.2	177.2	519.0	849.8
Home duties or caring for children	*5.2	11.9	28.2	21.5	15.7	17.7	21.3	52.0	173.3
Attending an educational institution	329.5	28.4	11.0	6.0	*2.8	**0.7	**0.5	**0.2	379.1
Own disability or handicap	12.1	13.7	27.8	38.4	26.3	38.0	11.0	23.4	190.7
Own illness or injury	7.8	18.5	26.4	37.1	25.3	26.6	20.5	38.6	200.8
Looking after ill or disabled person	**0.6	*2.5	7.9	9.9	*5.0	11.3	*4.4	11.7	53.2
Travel, holiday or leisure activity	7.4	6.5	*4.9	6.9	8.7	17.3	35.8	61.3	148.8
Working in unpaid voluntary job	*1.4	**0.5	*1.7	**1.3	6.1	10.7	9.7	19.0	50.3
Other	8.0	6.0	8.9	7.8	*3.0	*3.3	*3.3	*4.8	45.2
Total	373.6	90.1	121.4	142.1	136.0	214.7	283.6	729.9	2 091.3

FEMALES

Retired or voluntarily inactive	*2.0	**0.8	*4.4	20.1	42.1	96.5	157.0	528.1	851.0
Home duties or caring for children	68.7	288.6	297.8	189.2	123.1	129.1	120.3	266.9	1 483.7
Attending an educational institution	314.8	41.8	18.7	12.1	*2.9	*1.5	**0.6	—	392.5
Own disability or handicap	7.1	7.0	11.0	27.2	16.6	14.3	6.5	21.2	110.9
Own illness or injury	9.6	*4.6	16.3	25.6	21.8	17.9	10.8	37.7	144.3
Looking after ill or disabled person	*2.7	*5.2	8.6	27.0	22.6	20.9	11.0	23.8	121.6
Travel, holiday or leisure activity	*5.0	*4.9	*2.2	6.5	8.6	21.6	30.6	43.1	122.4
Working in unpaid voluntary job	**0.8	**0.9	*3.8	*3.7	11.3	15.0	12.0	23.9	71.2
Other	*5.0	*4.7	*3.5	*4.2	*2.0	*2.2	**0.9	*1.7	24.1
Total	415.6	358.5	366.2	315.5	251.0	319.1	349.6	946.4	3 321.8

PERSONS

Retired or voluntarily inactive	*3.6	*2.7	9.0	33.3	85.2	185.6	334.2	1 047.1	1 700.8
Home duties or caring for children	73.9	300.5	326.0	210.6	138.8	146.8	141.6	318.8	1 657.0
Attending an educational institution	644.4	70.2	29.6	18.2	*5.7	*2.3	**1.1	**0.2	771.6
Own disability or handicap	19.2	20.7	38.8	65.6	42.9	52.3	17.5	44.6	301.6
Own illness or injury	17.5	23.1	42.7	62.6	47.2	44.6	31.3	76.3	345.2
Looking after ill or disabled person	*3.2	7.7	16.5	36.9	27.6	32.2	15.3	35.4	174.9
Travel, holiday or leisure activity	12.3	11.5	7.1	13.4	17.2	38.8	66.4	104.4	271.1
Working in unpaid voluntary job	*2.2	*1.4	*5.4	*5.0	17.3	25.7	21.6	42.9	121.6
Other	13.1	10.7	12.4	12.0	*5.0	*5.5	*4.2	6.5	69.4
Total	789.2	448.5	487.5	457.6	386.9	533.8	633.3	1 676.2	5 413.1

* estimate has a relative standard error of 25% to 50% and should be used with caution

** estimate has a relative standard error greater than 50% and is considered too unreliable for general use

— nil or rounded to zero (including null cells)

PERSONS WITH MARGINAL ATTACHMENT TO THE LABOUR FORCE

	WANTED TO WORK, NOT ACTIVELY LOOKING, BUT WERE AVAILABLE			Total with marginal attachment to the labour force	Total persons not in the labour force	Proportion not in the labour force(a)
					
	Discouraged job seekers	Other	Total			
	'000	'000	'000	'000	'000	%
MALES						
State or territory of usual residence						
New South Wales	7.1	66.4	73.5	83.1	727.4	27.2
Victoria	*5.2	53.0	58.2	62.9	517.7	25.9
Queensland	*3.5	35.8	39.3	43.6	380.1	24.5
South Australia	*1.8	19.1	20.9	23.4	183.7	29.8
Western Australia	*1.7	18.6	20.3	23.3	184.7	23.5
Tasmania	*0.9	7.2	8.1	9.2	62.5	32.7
Northern Territory(b)	**0.2	*1.1	*1.3	*1.5	9.9	16.9
Australian Capital Territory	—	3.3	3.3	3.5	25.4	20.0
Age group (years)						
15–19	*3.2	68.8	72.1	78.5	281.3	39.8
20–24	**0.7	25.4	26.2	29.3	92.3	12.6
25–34	**1.3	26.4	27.6	32.4	90.1	6.5
35–44	*1.7	24.3	26.0	30.2	121.4	8.2
45–54	*1.7	19.2	20.9	26.5	142.1	10.2
55–59	*2.1	17.1	19.1	19.3	136.0	21.6
60–64	6.4	13.9	20.3	21.3	214.7	42.5
65–69	*1.8	6.9	8.7	8.9	283.6	72.7
70 and over	*1.5	*2.6	*4.1	*4.1	729.9	92.8
Relationship in household						
Family member	15.0	159.9	174.9	192.9	1 605.3	25.0
Husband, wife or partner	10.0	61.0	71.0	77.7	1 139.2	23.8
Lone parent	**0.5	8.3	8.9	10.6	51.4	34.1
Dependent student	**1.0	58.5	59.5	66.2	256.8	50.4
Non-dependent child	*2.6	25.0	27.7	30.1	98.1	12.5
Other related individual	**0.8	7.0	7.8	8.3	59.7	34.1
Non-family member	*5.4	38.2	43.6	50.0	414.3	31.1
Relationship not determined	—	6.6	6.6	7.7	71.7	27.6
Country of birth(c)						
Born in Australia	12.6	151.7	164.3	183.1	1 377.8	24.1
Born overseas	7.8	52.9	60.7	67.4	713.2	31.3
Born in main English-speaking countries	*3.1	15.5	18.5	20.5	239.8	27.8
Born in other than main English-speaking countries	*4.7	37.4	42.2	46.9	473.4	33.4
Total	20.4	204.6	225.0	250.5	2 091.3	26.1

* estimate has a relative standard error of 25% to 50% and should be used with caution

** estimate has a relative standard error greater than 50% and is considered too unreliable for general use

— nil or rounded to zero (including null cells)

(a) Proportion of people not in the labour force in each corresponding civilian population group.

(b) Refers to mainly urban areas only. See paragraph 7 of the Explanatory Notes for more information.

(c) Excludes 'inadequately described'.

	WANTED TO WORK, NOT ACTIVELY LOOKING, BUT WERE AVAILABLE			Total with marginal attachment to the labour force	Total persons not in the labour force	Proportion not in the labour force(a)
					
	Discouraged job seekers	Other	Total			
	'000	'000	'000	'000	'000	%
FEMALES						
State or territory of usual residence						
New South Wales	13.0	149.3	162.3	175.4	1 158.4	42.3
Victoria	9.6	115.5	125.1	133.4	860.1	41.6
Queensland	6.1	75.2	81.2	87.2	580.0	36.5
South Australia	*2.7	31.9	34.5	36.8	270.8	42.7
Western Australia	*2.6	40.2	42.8	46.3	313.5	39.3
Tasmania	*1.3	12.4	13.8	14.8	89.2	44.8
Northern Territory(b)	**0.3	*1.9	2.2	2.4	13.7	24.5
Australian Capital Territory	**0.2	4.2	4.4	5.0	36.2	27.2
Age group (years)						
15-19	*2.7	59.3	62.0	68.8	257.4	38.1
20-24	*2.8	45.7	48.5	52.6	158.2	22.2
25-34	*4.5	112.6	117.1	125.5	358.5	25.5
35-44	*4.7	106.0	110.7	118.6	366.2	24.3
45-54	*5.7	58.8	64.5	69.7	315.5	22.2
55-59	*4.2	26.0	30.2	31.0	251.0	39.5
60-64	6.0	17.0	23.1	24.7	319.1	64.3
65-69	*3.4	*3.4	6.7	6.7	349.6	88.5
70 and over	*1.7	*1.9	*3.7	*3.7	946.4	97.7
Relationship in household						
Family member						
Husband, wife or partner	18.1	235.5	253.6	265.3	1 811.2	38.6
Lone parent	*4.4	77.7	82.1	91.1	299.0	41.8
Dependent student	*2.0	52.3	54.3	60.6	231.8	43.1
Non-dependent child	**1.1	14.1	15.1	16.2	60.1	13.4
Other related individual	**0.9	*4.8	*5.7	6.3	123.2	55.7
Non-family member						
Relationship not determined	—	15.2	15.2	17.3	114.9	40.7
Country of birth(c)						
Born in Australia	23.6	310.5	334.1	360.2	2 223.8	37.6
Born overseas	12.1	120.2	132.4	141.0	1 097.7	47.8
Born in main English-speaking countries	*2.9	37.7	40.6	43.2	335.9	41.0
Born in other than main English-speaking countries	9.3	82.5	91.8	97.8	761.9	51.6
Total	35.8	430.7	466.4	501.1	3 321.8	40.4

* estimate has a relative standard error of 25% to 50% and should be used with caution

** estimate has a relative standard error greater than 50% and is considered too unreliable for general use

— nil or rounded to zero (including null cells)

(a) Proportion of people not in the labour force in each corresponding civilian population group.

(b) Refers to mainly urban areas only. See paragraph 7 of the Explanatory Notes for more information.

(c) Excludes 'inadequately described'.

	WANTED TO WORK, NOT ACTIVELY LOOKING, BUT WERE AVAILABLE			Total with marginal attachment to the labour force	Total persons not in the labour force	Proportion not in the labour force(a)
					
	Discouraged job seekers	Other	Total			
	'000	'000	'000	'000	'000	%
PERSONS						
State or territory of usual residence						
New South Wales	20.1	215.7	235.8	258.4	1 885.8	34.9
Victoria	14.9	168.5	183.3	196.3	1 377.8	33.9
Queensland	9.6	111.0	120.5	130.7	960.1	30.6
South Australia	4.4	51.0	55.4	60.2	454.5	36.3
Western Australia	4.3	58.8	63.1	69.6	498.2	31.4
Tasmania	2.2	19.7	21.9	24.0	151.7	38.9
Northern Territory(b)	**0.5	3.1	3.5	3.8	23.6	20.6
Australian Capital Territory	**0.2	7.5	7.7	8.5	61.6	23.7
Age group (years)						
15-19	*5.9	128.2	134.1	147.2	538.7	39.0
20-24	*3.5	71.2	74.7	81.9	250.5	17.4
25-34	*5.8	138.9	144.7	157.8	448.5	16.1
35-44	6.4	130.2	136.6	148.7	487.5	16.3
45-54	7.4	78.0	85.5	96.2	457.6	16.3
55-59	6.2	43.1	49.3	50.3	386.9	30.6
60-64	12.5	31.0	43.4	46.0	533.8	53.3
65-69	*5.1	10.2	15.4	15.7	633.3	80.7
70 and over	*3.3	*4.5	7.8	7.8	1 676.2	95.5
Relationship in household						
Family member						
Husband, wife or partner	41.4	544.3	585.7	632.4	4 130.6	31.7
Lone parent	28.1	296.5	324.6	343.0	2 950.4	31.1
Dependent student	*4.9	86.0	91.0	101.7	350.4	40.5
Non-dependent child	*3.0	110.9	113.8	126.8	488.6	46.6
Other related individual	*3.7	39.1	42.8	46.3	158.2	12.8
Non-family member	*1.7	11.8	13.5	14.5	183.0	46.1
Relationship not determined	14.7	69.3	84.0	94.3	1 095.9	41.2
	—	21.7	21.7	25.0	186.6	34.4
Country of birth(c)						
Born in Australia	36.2	462.2	498.4	543.3	3 601.6	30.9
Born overseas	19.9	173.1	193.0	208.3	1 810.9	39.6
Born in main English-speaking countries	*5.9	53.2	59.1	63.7	575.6	34.2
Born in other than main English-speaking countries	14.0	119.9	133.9	144.7	1 235.2	42.7
Total	56.1	635.3	691.4	751.6	5 413.1	33.4

* estimate has a relative standard error of 25% to 50% and should be used with caution

** estimate has a relative standard error greater than 50% and is considered too unreliable for general use

— nil or rounded to zero (including null cells)

(a) Proportion of people not in the labour force in each corresponding civilian population group.

(b) Refers to mainly urban areas only. See paragraph 7 of the Explanatory Notes for more information.

(c) Excludes 'inadequately described'.

PERSONS WITH MARGINAL ATTACHMENT TO THE LABOUR FORCE, Time since last job and main activity when not in the labour force

	WANTED TO WORK, NOT ACTIVELY LOOKING, BUT WERE AVAILABLE			Total with marginal attachment to the labour force	Total persons not in the labour force
	Discouraged job seekers	Other	Total		
	'000	'000	'000		
MALES					
Time since last job					
Had a job	17.5	141.0	158.5	179.0	1 763.6
Under 12 months	6.1	60.5	66.5	78.3	214.7
1 year and under 3 years	*3.1	33.0	36.0	41.5	198.4
3 years and under 5 years	**1.1	17.3	18.4	19.3	173.2
5 years and under 10 years	*5.2	16.9	22.0	23.7	340.9
10 years and under 20 years	*1.7	11.2	12.8	13.4	493.3
20 years or more	**0.4	*2.3	*2.7	*2.7	343.1
Never had a job	*2.9	63.6	66.5	71.6	327.8
Main activity					
Retired or voluntarily inactive	6.0	13.6	19.7	20.9	849.8
Home duties or caring for children	*3.6	30.7	34.3	39.0	173.3
Attending an educational institution	*2.6	86.2	88.8	100.2	379.1
Own disability or handicap	**0.5	14.6	15.1	15.6	190.7
Own illness or injury	**0.3	18.1	18.4	22.0	200.8
Looking after ill or disabled person	**0.4	*4.6	*5.0	*5.1	53.2
Travel, holiday or leisure activity	*2.0	16.3	18.3	18.9	148.8
Working in unpaid voluntary job	*2.5	6.5	9.0	9.0	50.3
Other	*2.5	13.9	16.3	19.8	45.2
Total	20.4	204.6	225.0	250.5	2 091.3

FEMALES

Time since last job					
Had a job	28.5	354.9	383.4	412.2	2 768.9
Under 12 months	*5.7	99.1	104.8	118.9	334.0
1 year and under 3 years	*3.5	72.8	76.3	81.9	290.8
3 years and under 5 years	*2.2	43.1	45.3	48.2	219.6
5 years and under 10 years	7.3	63.9	71.2	72.9	397.1
10 years and under 20 years	*5.4	57.6	63.0	66.6	553.5
20 years or more	*4.4	18.3	22.8	23.6	973.8
Never had a job	7.3	75.8	83.0	89.0	552.9
Main activity					
Retired or voluntarily inactive	*4.3	9.1	13.4	15.4	851.0
Home duties or caring for children	18.7	276.1	294.8	311.0	1 483.7
Attending an educational institution	*5.8	88.9	94.7	104.9	392.5
Own disability or handicap	—	6.1	6.1	6.1	110.9
Own illness or injury	**0.7	17.4	18.1	20.0	144.3
Looking after ill or disabled person	**0.4	8.1	8.5	9.2	121.6
Travel, holiday or leisure activity	**1.1	12.3	13.5	14.3	122.4
Working in unpaid voluntary job	*3.4	*5.9	9.3	10.2	71.2
Other	**1.3	6.7	8.0	10.0	24.1
Total	35.8	430.7	466.4	501.1	3 321.8

* estimate has a relative standard error of 25% to 50% and should be used with caution

** estimate has a relative standard error greater than 50% and is considered too unreliable for general use

— nil or rounded to zero (including null cells)

	WANTED TO WORK, NOT ACTIVELY LOOKING, BUT WERE AVAILABLE			<i>Total with marginal attachment to the labour force</i>	<i>Total persons not in the labour force</i>
				
	<i>Discouraged job seekers</i>	<i>Other</i>	<i>Total</i>		
	'000	'000	'000	'000	'000
PERSONS					
Time since last job					
Had a job	46.0	495.9	541.9	591.1	4 532.5
Under 12 months	11.7	159.5	171.3	197.2	548.8
1 year and under 3 years	6.6	105.8	112.3	123.5	489.2
3 years and under 5 years	*3.2	60.5	63.7	67.5	392.8
5 years and under 10 years	12.5	80.8	93.3	96.7	738.0
10 years and under 20 years	7.1	68.8	75.8	80.0	1 046.8
20 years or more	*4.8	20.6	25.4	26.3	1 316.9
Never had a job	10.2	139.4	149.5	160.5	880.7
Main activity					
Retired or voluntarily inactive	10.3	22.7	33.1	36.4	1 700.8
Home duties or caring for children	22.3	306.8	329.2	350.0	1 657.0
Attending an educational institution	8.4	175.1	183.5	205.0	771.6
Own disability or handicap	**0.5	20.7	21.2	21.7	301.6
Own illness or injury	**1.0	35.5	36.5	42.0	345.2
Looking after ill or disabled person	**0.7	12.7	13.5	14.3	174.9
Travel, holiday or leisure activity	*3.2	28.6	31.8	33.2	271.1
Working in unpaid voluntary job	*5.9	12.4	18.3	19.2	121.6
Other	*3.7	20.6	24.3	29.8	69.4
Total	56.1	635.3	691.4	751.6	5 413.1

* estimate has a relative standard error of 25% to 50% and should be used with caution

** estimate has a relative standard error greater than 50% and is considered too unreliable for general use

PERSONS WITH MARGINAL ATTACHMENT TO THE LABOUR FORCE, Intention to enter the labour force in the next 12 months

	INTENTION TO ENTER THE LABOUR FORCE IN THE NEXT 12 MONTHS			FULL-TIME OR PART-TIME PREFERENCE		Total(a) (b)
	<i>Intended to enter</i>	<i>Might enter</i>	<i>Did not intend to enter</i>	<i>Full-time</i>	<i>Part-time</i>	
	'000	'000	'000	'000	'000	
Sex						
Males	163.2	45.3	35.4	88.2	126.6	250.5
Females	282.4	96.9	102.4	80.2	351.8	501.1
Wanted to work and were actively looking for work	60.2	—	—	20.8	33.2	60.2
Were available to start work within four weeks	37.3	—	—	12.4	20.6	37.3
Were not available to start work within four weeks	22.9	—	—	8.3	12.6	22.9
Wanted to work but were not actively looking for work and were available to start work within four weeks	385.4	142.1	137.8	147.5	445.3	691.4
Discouraged job seekers(c)	23.8	11.4	20.0	10.9	26.6	56.1
Considered too old by employers	*3.4	*4.7	11.9	*1.4	8.7	20.7
Lacked the necessary schooling, training, skills or experience	6.4	*2.9	*2.5	*2.7	7.1	11.9
Difficulties because of language or ethnic background	*2.6	**0.8	*2.6	*2.7	**1.1	6.1
No jobs in locality or line of work	10.3	*2.3	*2.3	*3.4	8.9	15.2
Other reasons	361.6	130.7	117.9	136.6	418.6	635.3
Personal reasons	174.7	61.5	51.8	69.6	189.8	300.4
Own ill health, physical disability or pregnancy	44.5	27.0	22.6	20.2	55.7	100.4
Attending an educational institution	111.1	24.0	14.7	41.2	104.6	153.0
Other personal reasons	19.2	10.5	14.5	8.2	29.5	47.1
Family reasons	101.0	56.8	54.3	32.2	166.0	222.7
Ill health of other than self	6.0	*3.9	*3.5	*4.6	7.2	14.3
Caring for children	61.6	34.7	34.4	16.6	108.7	136.1
Other family considerations	33.4	18.2	16.4	11.0	50.1	72.3
No jobs in suitable hours	*2.7	*1.4	**0.4	**0.7	*4.0	*4.8
Other reasons	34.0	6.9	9.8	13.4	29.1	51.8
Had a job to go to(d)	44.0	*1.8	*1.6	18.2	25.2	47.6
Did not know	*5.1	*2.2	—	*2.6	*4.5	7.9
Total	445.6	142.1	137.8	168.3	478.4	751.6

* estimate has a relative standard error of 25% to 50% and should be used with caution

** estimate has a relative standard error greater than 50% and is considered too unreliable for general use

— nil or rounded to zero (including null cells)

(a) Includes people who had no preference for full-time or part-time work or were 'undecided'.

(b) Includes those people who 'did not know' whether they intended to enter the labour force in the next 12 months.

(c) Includes 'considered too young by employers' and 'no jobs at all'.

(d) Includes people who had a job but, up until the end of the reference week, had been away from work without pay for four weeks or longer and had not been actively looking for work.

7

PERSONS WITH MARGINAL ATTACHMENT NOT ACTIVELY LOOKING FOR WORK, Main reason
for not actively looking for work

	AGE GROUP (YEARS)						SEX		
	15-24	25-34	35-44	45-54	55-69	70 and over	Males	Females	Total
	'000	'000	'000	'000	'000	'000	'000	'000	'000
Discouraged job seekers(a)	9.4	*5.8	6.4	7.4	23.8	*3.3	20.4	35.8	56.1
Considered too old by employers	—	—	—	*1.9	15.5	*3.3	8.7	11.9	20.7
Lacked the necessary schooling, training, skills or experience	*4.8	*2.0	**1.1	*2.3	*1.7	—	*3.2	8.6	11.9
Difficulties because of language or ethnic background	—	*2.0	*1.9	**0.8	**1.3	—	*1.7	*4.4	6.1
No jobs in locality or line of work	*4.3	*1.8	*3.0	*2.2	*4.0	—	*5.0	10.2	15.2
Other reasons	199.3	138.9	130.2	78.0	84.2	*4.5	204.6	430.7	635.3
Personal reasons	142.3	39.6	32.3	35.3	48.0	*3.0	136.9	163.5	300.4
Own ill health, physical disability or pregnancy	13.0	17.6	15.2	24.1	29.4	**1.0	44.1	56.2	100.4
Attending an educational institution	123.3	15.5	8.7	*3.9	*1.6	—	74.7	78.3	153.0
Other personal reasons	6.0	6.5	8.4	7.3	17.0	*1.9	18.1	29.0	47.1
Family reasons	23.9	78.3	78.1	26.4	16.1	—	21.8	200.9	222.7
Ill health of other than self	**0.5	*1.9	*3.7	*3.5	*4.6	—	*5.8	8.5	14.3
Caring for children	17.8	59.2	48.4	10.1	**0.6	—	6.9	129.2	136.1
Other family considerations	*5.5	17.2	26.0	12.7	10.9	—	9.1	63.2	72.3
No jobs in suitable hours	**1.3	*1.7	*1.4	**0.4	—	—	**0.6	*4.1	*4.8
Other reasons	16.6	7.3	7.4	6.5	13.0	**1.0	25.2	26.6	51.8
Had a job to go to(b)	11.8	11.7	10.8	7.0	*5.8	**0.6	16.6	31.0	47.6
Did not know	*3.4	**0.4	**0.2	*2.5	*1.4	—	*3.4	*4.5	7.9
Total	208.8	144.7	136.6	85.5	108.1	7.8	225.0	466.4	691.4

* estimate has a relative standard error of 25% to 50% and should be used with caution

** estimate has a relative standard error greater than 50% and is considered too unreliable for general use

— nil or rounded to zero (including null cells)

(a) Includes 'considered too young by employers' and 'no jobs at all'.

(b) Includes people who had a job but, up until the end of the reference week, had been away from work without pay for four weeks or longer and had not been actively looking for work.

	Males	Females	Persons
	'000	'000	'000
.....			
Age group (years)			
15-24	*3.9	*5.5	9.4
25-44	*3.0	9.2	12.2
45-54	*1.7	*5.7	7.4
55-59	*2.1	*4.2	6.2
60-64	6.4	6.0	12.5
65 and over	*3.3	*5.1	8.4
Whether looked for work in the last 12 months			
Had looked for work	10.1	7.7	17.8
Less than 13 weeks ago	8.0	*5.4	13.4
13 weeks to 52 weeks ago	*2.1	*2.3	*4.4
Had not looked for work	10.3	28.0	38.3
Intention to enter the labour force in the next 12 months			
Intended to enter(a)	15.1	20.1	35.2
Did not intend to enter(b)	*5.3	15.6	20.9
Time since last job			
Had a job	17.5	28.5	46.0
Under twelve months	6.1	*5.7	11.7
1 year and under 3 years	*3.1	*3.5	6.6
3 years and under 5 years	**1.1	*2.2	*3.2
5 years and under 10 years	*5.2	7.3	12.5
10 years or more	*2.1	9.8	11.9
Never had a job	*2.9	7.3	10.2
Total	20.4	35.8	56.1

* estimate has a relative standard error of 25% to 50% and should be used with caution

** estimate has a relative standard error greater than 50% and is considered too unreliable for general use

(a) Includes 'might enter the labour force'.

(b) Includes 'did not know'.

	<i>Wanted to work but not looking and not available</i>	<i>Did not want to work</i>	<i>Total without marginal attachment(a)</i>	<i>Total not in the labour force</i>
	'000	'000	'000	'000
MALES				
State or territory of usual residence				
New South Wales	31.0	535.9	644.3	727.4
Victoria	32.6	390.4	454.8	517.7
Queensland	15.5	291.3	336.5	380.1
South Australia	11.1	143.3	160.3	183.7
Western Australia	10.3	141.8	161.4	184.7
Tasmania	2.5	43.6	53.3	62.5
Northern Territory(b)	**0.5	6.1	8.4	9.9
Australian Capital Territory	2.0	18.7	21.8	25.4
Age group (years)				
15-19	25.4	175.7	202.8	281.3
20-24	13.5	43.6	63.0	92.3
25-34	14.5	35.5	57.7	90.1
35-44	19.4	49.8	91.2	121.4
45-54	19.0	59.7	115.6	142.1
55-59	6.8	85.3	116.6	136.0
60-64	*4.2	146.2	193.5	214.7
65-69	*2.3	262.8	274.7	283.6
70 and over	**0.2	712.5	725.8	729.9
Relationship in household				
Family member	76.8	1 223.7	1 412.4	1 605.3
Husband, wife or partner	31.2	951.6	1 061.5	1 139.2
Lone parent	*3.8	31.2	40.9	51.4
Dependent student	24.2	165.3	190.6	256.8
Non-dependent child	12.6	34.1	68.0	98.1
Other related individual	*5.0	41.5	51.5	59.7
Non-family member	23.4	291.1	364.3	414.3
Relationship not determined	*5.3	56.4	64.1	71.7
Country of birth(c)				
Born in Australia	69.7	1 011.3	1 194.7	1 377.8
Born overseas	35.8	559.6	645.8	713.2
Born in main English-speaking countries	8.4	197.8	219.3	239.8
Born in other than main English-speaking countries	27.4	361.8	426.5	473.4
Time since last job				
Had a job	78.1	1 362.2	1 584.6	1 763.6
Under 12 months	25.2	106.7	136.4	214.7
1 year and under 3 years	18.4	123.4	156.8	198.4
3 years and under 5 years	11.6	124.7	153.9	173.2
5 years and under 10 years	12.6	270.2	317.1	340.9
10 years and under 20 years	7.6	427.8	480.0	493.3
20 years or more	*2.7	309.3	340.4	343.1
Never had a job	27.3	209.1	256.2	327.8
Main activity				
Retired or voluntarily inactive	*5.4	801.4	828.9	849.8
Home duties or caring for children	9.1	117.3	134.3	173.3
Attending an educational institution	42.1	234.5	278.9	379.1
Own disability or handicap	12.1	86.1	175.1	190.7
Own illness or injury	24.7	108.6	178.8	200.8
Looking after ill or disabled person	*4.8	38.7	48.2	53.2
Travel, holiday or leisure activity	*2.9	125.2	129.9	148.8
Working in unpaid voluntary job	**0.7	38.1	41.4	50.3
Other	*3.8	21.3	25.5	45.2
Total	105.4	1 571.2	1 840.8	2 091.3

* estimate has a relative standard error of 25% to 50% and should be used with caution (a) Includes 272,600 people (164,200 men and 108,400 women) who were 'permanently unable to work'.

** estimate has a relative standard error greater than 50% and is considered too unreliable for general use (b) Refers to mainly urban areas only. See paragraph 7 of the Explanatory Notes for more information.

(c) Excludes 'inadequately described'.

	<i>Wanted to work but not looking and not available</i>	<i>Did not want to work</i>	<i>Total without marginal attachment(a)</i>	<i>Total not in the labour force</i>
	'000	'000	'000	'000
FEMALES				
State or territory of usual residence				
New South Wales	77.1	855.8	983.0	1 158.4
Victoria	54.7	650.1	726.7	860.1
Queensland	35.7	438.2	492.8	580.0
South Australia	19.4	211.4	234.0	270.8
Western Australia	19.1	240.7	267.2	313.5
Tasmania	4.6	65.0	74.4	89.2
Northern Territory(b)	2.1	8.0	11.3	13.7
Australian Capital Territory	2.0	28.2	31.2	36.2
Age group (years)				
15-19	25.9	162.0	188.7	257.4
20-24	23.8	77.4	105.6	158.2
25-34	63.5	164.9	233.0	358.5
35-44	58.4	176.0	247.6	366.2
45-54	27.0	195.7	245.8	315.5
55-59	10.1	187.4	220.0	251.0
60-64	*4.3	266.1	294.4	319.1
65-69	*1.5	336.0	342.9	349.6
70 and over	**0.4	931.9	942.7	946.4
Relationship in household				
Family member	188.9	1 821.2	2 085.8	2 525.3
Husband, wife or partner	128.3	1 367.7	1 545.9	1 811.2
Lone parent	28.1	167.6	207.8	299.0
Dependent student	23.4	147.8	171.2	231.8
Non-dependent child	6.3	30.2	43.9	60.1
Other related individual	*2.7	108.0	117.0	123.2
Non-family member	17.1	590.9	637.3	681.6
Relationship not determined	8.8	85.4	97.6	114.9
Country of birth(c)				
Born in Australia	147.9	1 644.2	1 863.6	2 223.8
Born overseas	66.9	852.9	956.7	1 097.7
Born in main English-speaking countries	14.4	269.0	292.7	335.9
Born in other than main English-speaking countries	52.5	583.9	664.1	761.9
Time since last job				
Had a job	176.0	2 101.9	2 356.7	2 768.9
Under 12 months	68.8	143.6	215.1	334.0
1 year and under 3 years	37.5	164.3	208.9	290.8
3 years and under 5 years	21.8	142.7	171.4	219.6
5 years and under 10 years	19.6	292.2	324.2	397.1
10 years and under 20 years	20.8	447.0	486.8	553.5
20 years or more	7.5	912.0	950.2	973.8
Never had a job	38.9	395.5	464.0	552.9
Main activity				
Retired or voluntarily inactive	*2.6	820.8	835.5	851.0
Home duties or caring for children	135.3	1 006.7	1 172.8	1 483.7
Attending an educational institution	42.8	242.8	287.6	392.5
Own disability or handicap	6.4	59.3	104.8	110.9
Own illness or injury	12.6	92.9	124.3	144.3
Looking after ill or disabled person	10.6	97.4	112.4	121.6
Travel, holiday or leisure activity	**0.9	106.8	108.0	122.4
Working in unpaid voluntary job	*1.6	58.7	61.1	71.2
Other	*2.1	12.0	14.1	24.1
Total	214.8	2 497.4	2 820.7	3 321.8

* estimate has a relative standard error of 25% to 50% and should be used with caution

** estimate has a relative standard error greater than 50% and is considered too unreliable for general use

(a) Includes 272,600 people (164,200 men and 108,400 women) who were 'permanently unable to work'.

(b) Refers to mainly urban areas only. See paragraph 7 of the Explanatory Notes for more information.

(c) Excludes 'inadequately described'.

	<i>Wanted to work but not looking and not available</i>	<i>Did not want to work</i>	<i>Total without marginal attachment(a)</i>	<i>Total not in the labour force</i>
	'000	'000	'000	'000
PERSONS				
State or territory of usual residence				
New South Wales	108.1	1 391.7	1 627.3	1 885.8
Victoria	87.3	1 040.5	1 181.5	1 377.8
Queensland	51.2	729.5	829.4	960.1
South Australia	30.5	354.7	394.3	454.5
Western Australia	29.4	382.5	428.6	498.2
Tasmania	7.1	108.7	127.7	151.7
Northern Territory(b)	2.6	14.2	19.7	23.6
Australian Capital Territory	4.0	46.9	53.1	61.6
Age group (years)				
15-19	51.3	337.7	391.5	538.7
20-24	37.2	121.1	168.6	250.5
25-34	78.0	200.4	290.7	448.5
35-44	77.8	225.8	338.8	487.5
45-54	46.0	255.4	361.4	457.6
55-59	16.9	272.8	336.6	386.9
60-64	8.6	412.3	487.9	533.8
65-69	*3.8	598.8	617.6	633.3
70 and over	**0.6	1 644.4	1 668.5	1 676.2
Relationship in household				
Family member	265.7	3 044.9	3 498.2	4 130.6
Husband, wife or partner	159.6	2 319.3	2 607.4	2 950.4
Lone parent	31.8	198.7	248.7	350.4
Dependent student	47.6	313.1	361.8	488.6
Non-dependent child	18.9	64.3	111.9	158.2
Other related individual	7.8	149.5	168.4	183.0
Non-family member	40.5	881.9	1 001.6	1 095.9
Relationship not determined	14.1	141.8	161.6	186.6
Country of birth(c)				
Born in Australia	217.6	2 655.5	3 058.3	3 601.6
Born overseas	102.7	1 412.5	1 602.6	1 810.9
Born in main English-speaking countries	22.8	466.8	512.0	575.6
Born in other than main English-speaking countries	79.9	945.7	1 090.6	1 235.2
Time since last job				
Had a job	254.0	3 464.1	3 941.3	4 532.5
Under 12 months	94.0	250.3	351.5	548.8
1 year and under 3 years	55.9	287.8	365.7	489.2
3 years and under 5 years	33.5	267.4	325.3	392.8
5 years and under 10 years	32.2	562.4	641.3	738.0
10 years and under 20 years	28.4	874.9	966.8	1 046.8
20 years or more	10.2	1 221.4	1 290.6	1 316.9
Never had a job	66.2	604.6	720.2	880.7
Main activity				
Retired or voluntarily inactive	8.0	1 622.2	1 664.4	1 700.8
Home duties or caring for children	144.3	1 123.9	1 307.0	1 657.0
Attending an educational institution	84.9	477.3	566.6	771.6
Own disability or handicap	18.4	145.4	279.8	301.6
Own illness or injury	37.3	201.5	303.1	345.2
Looking after ill or disabled person	15.4	136.2	160.6	174.9
Travel, holiday or leisure activity	*3.7	232.0	237.9	271.1
Working in unpaid voluntary job	*2.3	96.9	102.4	121.6
Other	*5.9	33.3	39.6	69.4
Total	320.2	4 068.7	4 661.5	5 413.1

* estimate has a relative standard error of 25% to 50% and should be used with caution (a) Includes 272,600 people (164,200 men and 108,400 women) who were 'permanently unable to work'.

** estimate has a relative standard error greater than 50% and is considered too unreliable for general use (b) Refers to mainly urban areas only. See paragraph 7 of the Explanatory Notes for more information.

(c) Excludes 'inadequately described'.

PERSONS NOT IN THE LABOUR FORCE DUE TO CARING FOR CHILDREN (a)

AVAILABLE FOR WORK

	<i>Caring for children was the main reason for not actively looking</i>	<i>Caring for children was a reason for not actively looking(b)</i>	<i>Not available for work due to caring for children</i>	<i>Total</i>
	'000	'000	'000	'000
FEMALES				
Age group (years)				
15-24	17.4	20.5	9.5	30.0
25-34	57.3	66.1	34.4	100.4
35-44	45.0	50.9	27.7	78.6
45-54	9.3	10.8	*3.0	13.8
55 and over	**0.2	**1.0	**0.5	*1.5
Age of youngest child(c)				
0-2 years	62.0	70.4	56.3	126.7
3-5 years	38.5	43.1	9.5	52.6
6-12 years	23.7	29.4	6.2	35.6
Relationship in household(d)				
Family member(e)	125.0	144.7	73.4	218.2
Husband, wife or partner	87.2	100.3	62.8	163.1
Lone parent	37.0	43.5	9.8	53.3
Relationship not determined	*3.8	*3.8	*1.6	*5.3
Country of birth(f)				
Born in Australia	92.7	108.9	52.0	160.8
Born overseas	36.5	40.4	23.0	63.4
Born in main English-speaking countries	12.4	13.8	*4.4	18.2
Born in other than main English-speaking countries	24.1	26.6	18.6	45.2
Total	129.2	149.3	75.0	224.2

PERSONS (g)

Age group (years)				
15-24	17.8	20.9	9.5	30.4
25-34	59.2	68.0	34.4	102.4
35-44	48.4	54.4	28.1	82.4
45-54	10.1	12.6	*3.2	15.8
55 and over	**0.6	**1.3	**0.7	*2.0
Age of youngest child(c)				
0-2 years	63.9	72.3	56.4	128.7
3-5 years	40.3	44.9	9.7	54.7
6-12 years	26.3	32.5	6.5	39.0
Relationship in household(d)				
Family member(e)	131.9	152.6	74.3	227.0
Husband, wife or partner	91.6	105.5	63.4	169.0
Lone parent	39.4	46.2	10.0	56.2
Relationship not determined	*3.8	*3.8	*1.6	*5.3
Country of birth(f)				
Born in Australia	98.9	115.5	52.6	168.1
Born overseas	37.2	41.6	23.3	64.9
Born in main English-speaking countries	12.7	14.1	*4.4	18.5
Born in other than main English-speaking countries	24.5	27.5	18.9	46.4
Total	136.1	157.1	75.9	233.0

* estimate has a relative standard error of 25% to 50% and should be used with caution

** estimate has a relative standard error greater than 50% and is considered too unreliable for general use

(a) From 2006 includes people whose youngest child was aged 12 years. See paragraph 22 of the Explanatory Notes for more information.

(b) Includes people who were available for work but not actively looking, and child care was not the main reason for looking.

(c) Excludes people whose youngest child was aged 13 years or over, and not applicable.

(d) Excludes 'non-family member'.

(e) Includes 'non-dependent child'.

(f) Excludes 'inadequately described'.

(g) Includes males.

	STATUS IN EMPLOYMENT		FULL-TIME OR PART-TIME STATUS		Total(a)
	Employee	Own account worker/Employer	Full-time	Part-time	
	'000	'000	'000	'000	
MALES					
Reason for ceasing last job					
Job loser	468.4	59.6	414.3	106.1	528.9
Retrenched, dismissed	186.5	*2.8	156.1	30.8	189.3
Job was temporary or seasonal	64.6	*3.4	28.3	38.8	68.2
Own ill health or injury	212.6	41.6	218.5	32.3	254.9
Business closed down for economic reasons	*4.6	11.9	11.4	*4.2	16.5
Job leaver(b)	753.0	136.6	730.8	148.6	891.5
Unsatisfactory work arrangements	38.1	*2.8	23.8	16.6	40.9
Retired, did not want to work any longer	434.1	83.8	457.9	54.2	518.0
Own disability or handicap	115.0	19.0	113.2	18.2	134.7
Returned to studies	52.1	*1.5	23.3	30.6	54.0
To look after family, house or someone else	37.9	7.8	37.1	8.3	45.7
To have holidays, moved house or spouse transfer	30.2	*2.4	21.5	11.1	32.8
Business closed down for other than economic reasons	11.3	15.6	25.5	*1.5	27.6
Other	32.4	*3.7	26.9	7.8	36.1
Occupation in last job(c) (d)					
Managers	130.3	61.6	180.9	10.6	192.2
Professionals	151.7	21.6	139.2	31.7	173.3
Technicians and Trades Workers	259.0	55.0	277.3	31.9	314.7
Community and Personal Service Workers	59.4	*2.7	42.1	19.0	62.5
Clerical and Administrative Workers	110.8	*5.7	94.9	21.5	116.8
Sales Workers	68.1	11.3	52.2	26.4	79.8
Machinery Operators And Drivers	190.3	17.0	173.1	32.2	207.7
Labourers	245.7	20.9	180.9	80.9	267.1
Whether looked for work in the last 12 months					
Had looked for work	103.2	10.4	65.1	46.3	113.7
Less than 13 weeks ago	79.5	8.9	52.7	33.8	88.6
13 weeks and less than 26 weeks ago	9.5	**0.7	*5.9	*4.1	10.2
26 weeks to 52 weeks ago	14.1	**0.8	6.5	8.4	14.9
Had not looked for work	1 118.2	185.7	1 079.9	208.4	1 306.8
Time since last job(e)					
Under 12 months	192.3	21.7	120.7	91.9	214.7
1 year and under 3 years	166.2	31.6	135.9	57.6	198.4
3 years and under 5 years	139.9	32.8	144.1	25.8	173.2
5 years and under 10 years	288.6	52.0	296.6	40.6	340.9
10 years and under 20 years	434.3	58.0	447.7	38.8	493.3
Total	1 221.3	196.1	1 145.0	254.7	1 420.5

* estimate has a relative standard error of 25% to 50% and should be used with caution

** estimate has a relative standard error greater than 50% and is considered too unreliable for general use

(a) Includes people who were 'contributing family workers' and 'unpaid voluntary workers', and people whose full-time status in their last job 'varied' or they 'did not know'.

(b) Includes 'pregnancy or to have children' and 'to get married'.

(c) Excludes 'inadequately described'.

(d) From September 2006 occupation data are classified according to the ANZSCO First Edition. See paragraphs 19 to 21 of the Explanatory Notes for more information.

(e) Excludes people whose last job was '20 years or more' ago or who 'never had a job'.

	STATUS IN EMPLOYMENT		FULL-TIME OR PART-TIME STATUS		
	Employee	Own account worker/Employer	Full-time	Part-time	Total(a)
	'000	'000	'000	'000	'000
FEMALES					
Reason for ceasing last job					
Job loser	426.9	33.7	224.0	229.9	462.0
Retrenched, dismissed	157.0	*4.5	80.9	78.6	162.3
Job was temporary or seasonal	89.3	*2.0	25.9	62.8	91.4
Own ill health or injury	172.2	12.0	103.1	79.0	184.6
Business closed down for economic reasons	8.4	15.2	14.1	9.5	23.6
Job leaver	1 209.8	119.8	781.0	532.2	1 333.1
Unsatisfactory work arrangements	69.1	*1.9	28.2	41.6	70.9
Retired, did not want to work any longer	358.2	49.2	252.0	147.9	407.4
Own disability or handicap	55.5	7.2	35.2	26.3	63.5
Returned to studies	61.0	*1.6	23.8	38.7	63.3
Pregnancy or to have children	360.6	11.3	243.5	125.0	373.0
To get married	13.4	**1.1	12.7	*1.8	14.5
To look after family, house or someone else	125.7	16.5	72.5	68.5	142.2
To have holidays, moved house or spouse transfer	102.4	6.0	57.0	51.0	109.2
Business closed down for other than economic reasons	13.7	20.0	26.0	7.7	34.0
Other	50.1	*5.0	30.1	23.7	55.1
Occupation in last job(b)(c)					
Managers	96.5	53.6	125.1	23.5	150.5
Professionals	220.7	14.8	144.3	89.7	236.9
Technicians and Trades Workers	92.7	13.0	69.7	35.0	105.7
Community and Personal Service Workers	219.4	9.1	97.3	128.4	228.8
Clerical and Administrative Workers	413.4	21.8	276.1	153.1	435.8
Sales Workers	220.3	15.1	91.5	141.2	236.4
Machinery Operators And Drivers	56.3	*5.9	44.2	17.1	62.5
Labourers	314.4	19.6	155.2	172.2	334.8
Whether looked for work in the last 12 months					
Had looked for work	147.7	6.8	64.2	87.6	154.6
Less than 13 weeks ago	108.1	6.0	48.0	64.4	114.1
13 weeks and less than 26 weeks ago	14.4	**0.8	*4.6	10.1	15.2
26 weeks to 52 weeks ago	25.2	—	11.5	13.0	25.2
Had not looked for work	1 488.9	146.7	940.8	674.5	1 640.5
Time since last job(d)					
Under 12 months	315.3	17.9	133.5	195.4	334.0
1 year and under 3 years	264.3	25.1	133.6	152.1	290.8
3 years and under 5 years	197.7	20.8	123.8	93.8	219.6
5 years and under 10 years	356.4	39.7	249.7	140.5	397.1
10 years and under 20 years	503.0	50.0	364.4	180.3	553.5
Total	1 636.7	153.5	1 005.0	762.1	1 795.1

* estimate has a relative standard error of 25% to 50% and should be used with caution

** estimate has a relative standard error greater than 50% and is considered too unreliable for general use

— nil or rounded to zero (including null cells)

(a) Includes people who were 'contributing family workers' and 'unpaid voluntary workers', and people whose full-time status in their last job 'varied' or they 'did not know'.

(b) Excludes 'inadequately described'.

(c) From September 2006 occupation data are classified according to the ANZSCO First Edition. See paragraphs 19 to 21 of the Explanatory Notes for more information.

(d) Excludes people whose last job was '20 years or more' ago or who 'never had a job'.

	STATUS IN EMPLOYMENT		FULL-TIME OR PART-TIME STATUS		
	Employee	Own account worker/Employer	Full-time	Part-time	Total(a)
	'000	'000	'000	'000	'000
PERSONS					
Reason for ceasing last job					
Job loser	895.3	93.2	638.3	336.0	990.9
Retrenched, dismissed	343.6	7.3	237.0	109.4	351.6
Job was temporary or seasonal	153.9	*5.3	54.2	101.7	159.6
Own ill health or injury	384.7	53.6	321.6	111.3	439.5
Business closed down for economic reasons	13.1	27.0	25.5	13.7	40.1
Job leaver	1 962.7	256.4	1 511.8	680.7	2 224.7
Unsatisfactory work arrangements	107.2	*4.6	52.0	58.2	111.8
Retired, did not want to work any longer	792.3	133.0	709.8	202.1	925.3
Own disability or handicap	170.5	26.3	148.4	44.6	198.1
Returned to studies	113.1	*3.1	47.2	69.2	117.3
Pregnancy or to have children	362.4	11.3	245.1	125.3	374.8
To get married	13.5	**1.1	12.8	*1.8	14.6
To look after family, house or someone else	163.6	24.3	109.6	76.7	187.9
To have holidays, moved house or spouse transfer	132.6	8.4	78.4	62.0	142.0
Business closed down for other than economic reasons	25.0	35.6	51.5	9.2	61.6
Other	82.5	8.7	57.0	31.5	91.2
Occupation in last job(b)(c)					
Managers	226.8	115.2	306.0	34.1	342.8
Professionals	372.4	36.4	283.5	121.5	410.2
Technicians and Trades Workers	351.7	68.0	346.9	66.9	420.4
Community and Personal Service Workers	278.8	11.8	139.5	147.4	291.3
Clerical and Administrative Workers	524.2	27.5	370.9	174.6	552.6
Sales Workers	288.4	26.5	143.7	167.6	316.2
Machinery Operators And Drivers	246.6	22.8	217.3	49.3	270.2
Labourers	560.1	40.4	336.1	253.1	601.9
Whether looked for work in the last 12 months					
Had looked for work	250.9	17.2	129.3	133.8	268.3
Less than 13 weeks ago	187.6	14.9	100.7	98.2	202.7
13 weeks and less than 26 weeks ago	23.9	*1.5	10.5	14.3	25.5
26 weeks to 52 weeks ago	39.3	**0.8	18.1	21.4	40.1
Had not looked for work	2 607.1	332.4	2 020.8	882.9	2 947.2
Time since last job(d)					
Under 12 months	507.6	39.6	254.2	287.3	548.8
1 year and under 3 years	430.5	56.7	269.5	209.7	489.2
3 years and under 5 years	337.7	53.7	267.9	119.6	392.8
5 years and under 10 years	645.0	91.6	546.3	181.1	738.0
10 years and under 20 years	937.3	108.0	812.1	219.0	1 046.8
Total	2 858.0	349.6	2 150.0	1 016.7	3 215.6

* estimate has a relative standard error of 25% to 50% and should be used with caution

** estimate has a relative standard error greater than 50% and is considered too unreliable for general use

(a) Includes people who were 'contributing family workers' and 'unpaid voluntary workers', and people whose full-time status in their last job 'varied' or they 'did not know'.

(b) Excludes 'inadequately described'.

(c) From September 2006 occupation data are classified according to the ANZSCO First Edition. See paragraphs 19 to 21 of the Explanatory Notes for more information.

(d) Excludes people whose last job was '20 years or more' ago or who 'never had a job'.

	NSW	Vic.	Qld	SA	WA	Tas.	NT(a)	ACT	Aust.
	'000	'000	'000	'000	'000	'000	'000	'000	'000
MALES									
Population 1:									
Persons not in the labour force	727.4	517.7	380.1	183.7	184.7	62.5	9.9	25.4	2 091.3
Population 2:									
Persons not in the labour force who wanted to work	114.1	95.5	59.1	34.5	33.6	11.7	*1.9	*5.5	355.9
Population 3:									
Persons not in the labour force with marginal attachment to the labour force	83.1	62.9	43.6	23.4	23.3	9.2	*1.5	*3.5	250.5
Population 4:									
Persons not in the labour force who wanted to work but were not actively looking for work and were available to start work within four weeks	73.5	58.2	39.3	20.9	20.3	8.1	**1.3	*3.3	225.0
Population 5:									
Persons not in the labour force who were discouraged job seekers	7.1	*5.2	*3.5	*1.8	*1.7	**0.9	**0.2	—	20.4
Population 6:									
Persons not in the labour force who wanted to work but were not actively looking for work and were not available to start work within four weeks	31.0	32.6	15.5	11.1	10.3	*2.5	**0.5	*2.0	105.4
Population 7:									
Persons not in the labour force because they were caring for children, who wanted to work but were not actively looking for work	*2.9	*1.5	*1.5	**1.1	*1.4	**0.3	—	**0.1	8.8
Population 8:									
Persons not in the labour force who previously had a job	599.2	427.1	331.5	159.5	163.9	52.7	7.9	21.6	1 763.6
Population 9:									
Persons not in the labour force without marginal attachment to the labour force	644.3	454.8	336.5	160.3	161.4	53.3	8.4	21.8	1 840.8
Population 10:									
Persons not in the labour force whose last job was less than 20 years ago	473.7	341.5	274.8	128.0	135.5	42.3	6.7	18.0	1 420.5
* estimate has a relative standard error of 25% to 50% and should be used with caution	— nil or rounded to zero (including null cells)								
** estimate has a relative standard error greater than 50% and is considered too unreliable for general use	(a) Refers to mainly urban areas only. See paragraph 7 of the Explanatory Notes for more information.								

	NSW	Vic.	Qld	SA	WA	Tas.	NT(a)	ACT	Aust.
	'000	'000	'000	'000	'000	'000	'000	'000	'000
FEMALES									
Population 1:									
Persons not in the labour force	1 158.4	860.1	580.0	270.8	313.5	89.2	13.7	36.2	3 321.8
Population 2:									
Persons not in the labour force who wanted to work	252.5	188.1	122.8	56.2	65.4	19.4	*4.5	7.0	715.9
Population 3:									
Persons not in the labour force with marginal attachment to the labour force	175.4	133.4	87.2	36.8	46.3	14.8	*2.4	*5.0	501.1
Population 4:									
Persons not in the labour force who wanted to work but were not actively looking for work and were available to start work within four weeks	162.3	125.1	81.2	34.5	42.8	13.8	*2.2	*4.4	466.4
Population 5:									
Persons not in the labour force who were discouraged job seekers	13.0	9.6	6.1	*2.7	*2.6	**1.3	**0.3	**0.2	35.8
Population 6:									
Persons not in the labour force who wanted to work but were not actively looking for work and were not available to start work within four weeks	77.1	54.7	35.7	19.4	19.1	*4.6	*2.1	*2.0	214.8
Population 7:									
Persons not in the labour force because they were caring for children, who wanted to work but were not actively looking for work	87.7	50.5	37.6	16.9	21.2	6.4	*1.9	*2.0	224.2
Population 8:									
Persons not in the labour force who previously had a job	931.1	704.5	509.1	239.1	267.4	76.4	9.9	31.6	2 768.9
Population 9:									
Persons not in the labour force without marginal attachment to the labour force	983.0	726.7	492.8	234.0	267.2	74.4	11.3	31.2	2 820.7
Population 10:									
Persons not in the labour force whose last job was less than 20 years ago	596.9	456.8	330.9	145.4	187.5	45.1	7.9	24.7	1 795.1

* estimate has a relative standard error of 25% to 50% and should be used with caution

** estimate has a relative standard error greater than 50% and is considered too unreliable for general use

(a) Refers to mainly urban areas only. See paragraph 7 of the Explanatory Notes for more information.

	NSW	Vic.	Qld	SA	WA	Tas.	NT(a)	ACT	Aust.
	'000	'000	'000	'000	'000	'000	'000	'000	'000
PERSONS									
Population 1:									
Persons not in the labour force	1 885.8	1 377.8	960.1	454.5	498.2	151.7	23.6	61.6	5 413.1
Population 2:									
Persons not in the labour force who wanted to work	366.6	283.7	181.9	90.7	99.0	31.1	6.4	12.5	1 071.9
Population 3:									
Persons not in the labour force with marginal attachment to the labour force	258.4	196.3	130.7	60.2	69.6	24.0	*3.8	8.5	751.6
Population 4:									
Persons not in the labour force who wanted to work but were not actively looking for work and were available to start work within four weeks	235.8	183.3	120.5	55.4	63.1	21.9	*3.5	7.7	691.4
Population 5:									
Persons not in the labour force who were discouraged job seekers	20.1	14.9	9.6	*4.4	*4.3	*2.2	**0.5	**0.2	56.1
Population 6:									
Persons not in the labour force who wanted to work but were not actively looking for work and were not available to start work within four weeks	108.1	87.3	51.2	30.5	29.4	7.1	*2.6	*4.0	320.2
Population 7:									
Persons not in the labour force because they were caring for children, who wanted to work but were not actively looking for work	90.6	52.0	39.1	18.0	22.6	6.7	*1.9	*2.1	233.0
Population 8:									
Persons not in the labour force who previously had a job	1 530.3	1 131.6	840.6	398.6	431.3	129.0	17.8	53.2	4 532.5
Population 9:									
Persons not in the labour force without marginal attachment to the labour force	1 627.3	1 181.5	829.4	394.3	428.6	127.7	19.7	53.1	4 661.5
Population 10:									
Persons not in the labour force whose last job was less than 20 years ago	1 070.6	798.2	605.7	273.4	322.9	87.4	14.6	42.7	3 215.6

* estimate has a relative standard error of 25% to 50% and should be used with caution

** estimate has a relative standard error greater than 50% and is considered too unreliable for general use

(a) Refers to mainly urban areas only. See paragraph 7 of the Explanatory Notes for more information.

EXPLANATORY NOTES

INTRODUCTION

1 The statistics in this publication were compiled from data collected in the Persons Not in the Labour Force Survey that was conducted throughout Australia in September 2006 as a supplement to the monthly Labour Force Survey (LFS). Respondents to the LFS who were in scope of the supplementary survey were asked further questions.

2 The publication *Labour Force, Australia* (cat. no. 6202.0) contains information about survey design, sample redesign, scope, coverage and population benchmarks relevant to the monthly LFS, which also apply to supplementary surveys. It also contains definitions of demographic and labour force characteristics, and information about telephone interviewing relevant to both the monthly LFS and supplementary surveys.

3 From April 2001 the LFS has been conducted using a redesigned questionnaire containing additional questions and some minor definitional changes. These changes also affect the supplementary surveys. For further details, see *Information Paper: Implementing the Redesigned Labour Force Survey Questionnaire* (cat. no. 6295.0) and *Information Paper: Questionnaires used in the Labour Force Survey* (cat. no. 6232.0).

CONCEPTS SOURCES AND METHODS

4 The conceptual framework used in Australia's LFS aligns closely with the standards and guidelines set out in Resolutions of the International Conference of Labour Statisticians. Descriptions of the underlying concepts and structure of Australia's labour force statistics, and the sources and methods used in compiling these estimates, are presented in *Labour Statistics: Concepts, Sources and Methods* (cat. no. 6102.0.55.001) which is available on the ABS web site <<http://www.abs.gov.au>> (Methods, Classifications, Concepts and Standards).

SCOPE

5 The scope of the LFS is restricted to people aged 15 years and over and excludes the following people:

- members of the permanent defence forces
- certain diplomatic personnel of overseas governments, customarily excluded from census and estimated populations
- overseas residents in Australia
- members of non-Australian defence forces (and their dependants).

6 Students at boarding schools, patients in hospitals, residents of homes (e.g. retirement homes, homes for people with disabilities), and inmates of prisons are excluded from all supplementary surveys.

7 This supplementary survey was conducted in both urban and rural areas in all states and territories, but excluded approximately 120,000 people living in very remote parts of Australia who would otherwise have been within the scope of the survey. The exclusion of these people will have only a minor impact on any aggregate estimates that are produced for individual states and territories, except the Northern Territory where such people account for around 23% of the population.

COVERAGE

8 The estimates in this publication relate to people covered by the survey in September 2006. In the LFS, coverage rules are applied which aim to ensure that each person is associated with only one dwelling and hence has only one chance of selection in the survey. See *Labour Force, Australia* (cat. no. 6202.0) for more details.

SAMPLE SIZE

9 Supplementary surveys are not always conducted on the full LFS sample. Since August 1994 the sample for supplementary surveys has been restricted to no more than seven-eighths of the LFS sample.

10 The initial sample for the September 2006 LFS consisted of 37,612 private dwelling households and special dwelling units. Of the 33,885 private dwelling households and special dwelling units that remained in the survey after sample loss (e.g. households selected in the survey which had no residents in scope for the LFS, vacant or derelict

EXPLANATORY NOTES *continued*

SAMPLE SIZE *continued*

dwellings and dwellings under construction), approximately 31,520 or 93.0% were fully responding to the Persons Not in the Labour Force Survey. The number of completed interviews obtained from these private dwelling households and special dwelling units (after taking into account scope, coverage and subsampling exclusions) was 17,441.

RELIABILITY OF THE ESTIMATES

- 11** Estimates in this publication are subject to sampling and non-sampling errors:
- Sampling error is the difference between the published estimate and the value that would have been produced if all dwellings had been included in the survey. For more information see the Technical Note.
 - Non-sampling errors are inaccuracies that occur because of imperfections in reporting by respondents and interviewers, and errors made in coding and processing data. These inaccuracies may occur in any enumeration, whether it be a full count or a sample. Every effort is made to reduce the non-sampling error to a minimum by careful design of questionnaires, intensive training and supervision of interviewers, and efficient processing procedures.

SEASONAL FACTORS

12 The estimates are based on information collected in the survey month, and, due to seasonal factors, may not be representative of other months of the year.

CLASSIFICATIONS USED

13 From 2006, occupation data are classified according to the *ANZSCO—Australian and New Zealand Standard Classification of Occupations, First Edition, 2006* (cat. no. 1220.0). This new classification replaces the *ASCO—Australian Standard Classification of Occupations, Second Edition, 1997* (cat. no. 1220.0). Data classified according to ASCO can be obtained on request.

14 Country of birth data are classified according to the *Standard Australian Classification of Countries (SACC), 1998* (cat. no. 1269.0).

COMPARABILITY OF TIME SERIES

15 Revisions are made to population benchmarks for the LFS after each five-yearly Census of Population and Housing. The last such revision was made in February 2004 to take account of the results of the 2001 Census of Population and Housing. Estimates from supplementary surveys conducted from and including February 2004 are therefore based on revised population benchmarks.

16 Persons Not in the Labour Force Surveys conducted up to and including September 1987 included all people aged 15 years and over. From September 1988 to September 2004, the survey excluded all people aged 70 years and over.

17 The scope of the Persons Not in the Labour Force Survey was expanded in September 2005 to include all people aged 15 years and over. This change resulted in about 1.6 million extra people coming within the scope of this survey. Users need to exercise care when comparing the estimates prior to 2005 with subsequent years. Direct comparisons should only be made where the populations are the same.

18 Comparability of 2001 to 2006 estimates with previous years, for people who wanted to work, including 'discouraged job seekers', may have been affected by the following:

- As part of the LFS redesigned questionnaire, implemented in April 2001, people aged 65 and over were allowed to specify that they are 'permanently not intending to work'. Those people who answered that they were 'permanently not intending to work' have not been asked for details about 'wanting to work' and 'looking for work'. It is likely that, if they had answered these questions, some of these people may have been classified as people who 'wanted work', and also as 'discouraged job seekers'.

EXPLANATORY NOTES *continued*

COMPARABILITY OF TIME SERIES *continued*

- A further change in the redesigned LFS questionnaire is that it more accurately identifies 'future starters'; that is, people waiting to start, within four weeks of the end of the reference week, a new job that they have already obtained (and could have started in the reference week if the job had been available then). Under International Labour Organisation (ILO) guidelines these people do not have to be actively looking for work to be classified as unemployed, and therefore are not asked questions related to job search activities. If they had been asked why they were not looking for work, it is possible that some may have given reasons other than 'had a job to go to', and as a result could have been classified as 'wanted to work', and also as 'discouraged job seekers'.

19 From September 2006, Persons Not in the Labour Force occupation data are classified according to the Australian and New Zealand Standard Classification of Occupations (ANZSCO) First Edition. This new classification replaces the Australian Standard Classification of Occupations (ASCO) Second Edition, which was adopted in the Persons Not In the Labour Force Survey in September 1998.

20 Like the previous ASCO Second Edition, ANZSCO First Edition uses the concepts of skill level and skill specialisation to classify occupations. While these criteria are essentially the same as those used for ASCO Second Edition, the application of the skill level criterion has changed. In ASCO Second Edition, the skill level required for entry to an occupation was considered to classify occupations. In ANZSCO, it is the skill level required for competent performance of the set of tasks associated with the occupation which is used to classify occupations.

21 The use of both skill level and skill specialisation to define the major groups in ANZSCO compared to just skill level in ASCO Second Edition has resulted in major groups which are more intuitively appealing and useful than their ASCO Second Edition predecessors. Accordingly, there have been changes to the way some occupations are classified in ANZSCO. For a detailed description of ANZSCO First Edition, refer to *ANZSCO—Australian and New Zealand Standard Classification of Occupations, First Edition, 2006* (cat. no. 1220.0).

22 From September 2006 estimates of people not in the labour force because they were caring for children, include people whose youngest child was aged 12 years. Previously questions relating to the care of children were only asked of people with children aged under 12 years. This change was made to ensure consistency with other ABS surveys. Users need to exercise care when comparing the estimates in Table 10 of this publication with previous publications.

COMPARABILITY WITH MONTHLY LFS STATISTICS

23 Due to differences in the scope and sample size of this supplementary survey and that of the LFS, the estimation procedure may lead to some small variations between labour force estimates from this survey and those from the LFS.

24 For the years 1988 to 2004, the difference between the estimates appearing in this publication and *Labour Force, Australia* (cat. no. 6202.0) is chiefly the result of excluding people aged 70 years and over from the sample of this supplementary survey. In these years, over one-quarter (29%) of the civilian population aged 15 years and over who were not in the labour force were excluded from answering questions because they were aged 70 years and over.

25 Core LFS series from April 1986 to March 2001 have been revised on the basis of the redesigned LFS questionnaire. Supplementary survey data have not been revised.

26 Further information on persons not in the labour force is available in *Labour Force, Australia* (cat. no. 6202.0).

EXPLANATORY NOTES *continued*

PREVIOUS SURVEYS

27 The Persons Not in the Labour Force Survey was first conducted in May 1975 and again in May 1977. From 1979 to 1987 the survey was collected twice a year (March and September). Since then it has been conducted annually in September. Results of previous surveys were published in:

- *Persons Not in the Labour Force, Australia* (cat. no. 6220.0)
- standard data service *Persons Not in the Labour Force, Australia* (cat. no. 6220.0.40.001) for 1994 and 1995 (available in hardcopy only).

NEXT SURVEY

28 The ABS will conduct this survey again in September 2007.

ACKNOWLEDGMENT

29 ABS publications draw extensively on information provided freely by individuals, businesses, governments and other organisations. Their continued cooperation is very much appreciated: without it, the wide range of statistics published by the ABS would not be available. Information received by the ABS is treated in strict confidence as required by the *Census and Statistics Act 1905*.

RELATED PUBLICATIONS

30 ABS publications which may be of interest include:

- *Australian Labour Market Statistics* (cat. no. 6105.0)
- *Job Search Experience, Australia* (cat. no. 6222.0)
- *Labour Statistics: Concepts, Sources and Methods* (cat. no. 6102.0.55.001)
- *Underemployed Workers, Australia* (cat. no. 6265.0)

31 Current publications and other products released by the ABS are listed in the *Catalogue of Publications and Products* (cat. no. 1101.0). The Catalogue is available from any ABS office or the ABS web site <<http://www.abs.gov.au>>. The ABS also issues a daily Release Advice on the web site which details products to be released in the week ahead.

APPENDIX 1 POPULATIONS AND DATA ITEMS LIST

DATA AVAILABLE ON REQUEST

The ABS has a range of data available on request from the Persons Not in the Labour Force Survey. This section lists the data items and populations which relate to the survey. More detailed breakdowns of some data items are available on request.

The population(s) for a particular data item refers to the people in the survey to whom the data relates.

For more information about the ABS data available on request, contact Kerry O'Brien on Canberra (02) 6252 5242, or by facsimile on (02) 6252 7512, or by email to <kerry.obrien@abs.gov.au>.

<i>Population 1</i>	Persons not in the labour force
<i>Population 2</i>	Persons not in the labour force who wanted to work
<i>Population 3</i>	Persons not in the labour force with marginal attachment to the labour force
<i>Population 4</i>	Persons not in the labour force who wanted to work but were not actively looking for work and were available to start work within four weeks
<i>Population 5</i>	Persons not in the labour force who were discouraged job seekers
<i>Population 6</i>	Persons not in the labour force who wanted to work but were not actively looking for work and were not available to start work within four weeks
<i>Population 7</i>	Persons not in the labour force because they were caring for children, who wanted to work but were not actively looking for work
<i>Population 8</i>	Persons not in the labour force who previously had a job
<i>Population 9</i>	Persons not in the labour force without marginal attachment to the labour force
<i>Population 10</i>	Persons not in the labour force whose last job was less than 20 years ago

APPENDIX 1 POPULATIONS AND DATA ITEMS LIST *continued*

<i>Data items</i>	<i>Populations</i>	<i>Data items</i>	<i>Population</i>
1 State or territory of usual residence	All	7C Country of birth of person (MESC)	A
New South Wales		Born in Australia	
Victoria		Born overseas	
Queensland		Born in main English-speaking countries	
South Australia		Born in other than main English-speaking countries	
Western Australia			
Tasmania		8 Age group (years)	A
Northern Territory		15–19	
Australian Capital Territory		20–24	
		25–34	
2 Area of usual residence	All	35–44	
State capital city		45–54	
Balance of state/territory		55–59	
		60–64	
3 Region of usual residence	All	65–69	
Standard labour force dissemination regions		70 and over	
		9A Persons not in the labour force summary variable	1, 8, 1
4 Sex	All	With marginal attachment to the labour force	
Males		Wanted to work and were actively looking for work	
Females		Were available to start work within four weeks	
		Were not available to start work within four weeks	
5 Marital status	All	Wanted to work but were not actively looking for work and were available to start work within four weeks	
Married		Discouraged job seekers	
Not married		Other	
		Without marginal attachment to the labour force	
6 Relationship in household	All	Wanted to work but were not actively looking for work and were not available to start work within four weeks	
Family member		Did not want to work	
Husband, wife or partner		Permanently unable to work	
With dependants			
Without dependants		9B Marginal attachment summary variable	
Lone parent		Wanted to work and were actively looking for work	
With dependants		Were available to start work within four weeks	
Without dependants		Were not available to start work within four weeks	
Dependent student		Wanted to work but were not actively looking for work and were available to start work within four weeks	
Non-dependent child		Discouraged job seekers	
Other related individual		Other	
Non-family member			
Lone person			
Not living alone			
Relationship not determined			
7A Country of birth of person and Year of arrival in Australia	All		
Born in Australia			
Born overseas			
Arrived before 1971			
Arrived 1971–1980			
Arrived 1981–1990			
Arrived 1991–2000			
Arrived 2001 to survey date			
		10 Whether wanted to work	1, 8, 1
7B Country of birth of person	All	Wanted to work	
Born in Australia		Might want to work	
Born overseas		Did not want to work	
Oceania and Antarctica		Did not know	
North-West Europe			
Southern and Eastern Europe			
North Africa and the Middle East			
South-East Asia			
North-East Asia			
Southern and Central Asia			
Americas			
Sub-Saharan Africa			

APPENDIX 1 POPULATIONS AND DATA ITEMS LIST *continued*

Data items	Populations	Data items	Populations
11 Whether looked for work in the last 12 months Had looked for work Less than 5 weeks ago 5 weeks and less than 8 weeks ago 8 weeks and less than 13 weeks ago 13–52 weeks ago 13 weeks and less than 26 weeks ago 26 weeks and less than 39 weeks ago 39–52 weeks ago Had not looked for work	All	14 Reason for ceasing last job <i>cont.</i> Had a job <i>cont.</i> Job leaver <i>cont.</i> To get married To look after family, house or someone else To have holidays, moved house or spouse transferred Business closed down for other than economic reasons Other Never had a job	All
12 Main activity when not in the labour force Retired or voluntarily inactive Home duties or caring for children Attending an educational institution Own disability or handicap Own illness or injury Looking after ill or disabled person Travel, holiday or leisure activity Working in unpaid voluntary job Other	All	15 Occupation in last job Last job less than 20 years ago Managers Professionals Technicians and Trades Workers Community and Personal Service Workers Clerical and Administrative Workers Sales Workers Machinery Operators and Drivers Labourers Last job 20 or more years ago Never had a job Note: This data item is classified according to ANZSCO First Edition but occupation data are also available classified to ASCO Second Edition. For more information see paragraph 13 of the Explanatory Notes.	All
13A Time since last job Had a job Under 12 months 1 week and under 4 weeks 4 weeks and under 8 weeks 8 weeks and under 13 weeks 13 weeks and under 26 weeks 26 weeks and under 39 weeks 39 weeks and under 52 weeks 1 year and under 3 years 3 years and under 10 years 3 years and under 5 years 5 years and under 10 years 10 years or more 10 years and under 20 years 20 years or more Never had a job	All	16A Status in employment in last job (1) Last job less than 20 years ago Employer Own account worker Employee Contributing family worker Unpaid voluntary worker Last job 20 or more years ago Never had a job	All
13B Whether had a job in the last 20 years Had a job Last job less than 20 years ago Last job 20 or more years ago Never had a job	All	16B Status in employment in last job (2) Last job less than 20 years ago Employee Own account worker/Employer Other Last job 20 or more years ago Never had a job	All
14 Reason for ceasing last job Had a job Job loser Retrenched, dismissed Job was temporary or seasonal Own ill health or injury Business closed down for economic reasons Job leaver Unsatisfactory work arrangements Retired, did not work any longer Own disability or handicap Returned to studies Pregnancy or to have children	All	Last job 20 or more years ago Never had a job 17 Full-time or part-time status in last job Last job less than 20 years ago Full-time Part-time Varied/Did not know Last job 20 or more years ago Never had a job	All
		18A Intention to enter the labour force Intended to enter the labour force Might enter the labour force Did not intend to enter the labour force Did not know Permanently unable to work Not applicable (full-time student)	All

APPENDIX 1 POPULATIONS AND DATA ITEMS LIST *continued*

<i>Data items</i>	<i>Populations</i>	<i>Data items</i>	<i>Population</i>
18B Intention to enter the labour force in the next 12 months	All	20 Main reason for not actively looking for work <i>cont.</i>	
Intended to enter the labour force in the next 12 months		Wanted to work but were not actively looking for work and were available to start work within four weeks <i>cont.</i>	
Might enter the labour force in the next 12 months		Other reasons <i>cont.</i>	
Did not intend to enter the labour force in the next 12 months		Other reasons	
Did not know		Had a job to go to	
Permanently unable to work		Did not know	
19 Full-time or part-time preference	2-7	21 All reasons for not actively looking for work	
Full-time		Discouraged job seekers	
Part-time		Considered too young by employers	
No preference		Considered too old by employers	
Undecided		Lacked the necessary schooling, training, skills or experience	
20 Main reason for not actively looking for work	4	Difficulties because of language or ethnic background	
Wanted to work and were actively looking for work		No jobs in locality or line of work	
Were available to start work within four weeks		No jobs at all	
Were not available to start work within four weeks		Other reasons	
Wanted to work but were not actively looking for work and were available to start work within four weeks		Personal reasons	
Discouraged job seekers		Own ill health, physical disability or pregnancy	
Considered too young by employers		Attending an educational institution	
Considered too old by employers		Had no need to work	
Lacked the necessary schooling, training, skills or experience		Welfare payments or pension may be affected	
Difficulties because of language or ethnic background		Moved house or holidays	
No jobs in locality or line of work		Family reasons	
No jobs at all		Ill health of other than self	
Other reasons		Caring for children	
Personal reasons		Other family considerations	
Own ill health, physical disability or pregnancy		No jobs in suitable hours	
Attending an educational institution		Other reasons	
Had no need to work		Had a job to go to	
Welfare payments or pension may be affected		Did not know	
Moved house or holidays		22 Main reason not working due to caring for children	
Family reasons		No child care in locality	
Ill health of other than self		No child care available at all	
Caring for children		Cost or too expensive	
No child care in locality		Booked out or no places available	
No child care available at all		Children too young or too old	
Cost or too expensive		Prefers to look after children	
Booked out or no places available		Quality of child care unsuitable	
Children too young or too old		Other child care reasons	
Prefers to look after children		23 Reason not available to start work within four weeks	
Quality of child care unsuitable		Personal reasons	
Other reasons		Own ill health, physical disability	
Other family considerations		Pregnancy	
No jobs in suitable hours		Studying or returning to studies	
		Moved house or holidays	
		Family reasons	
		Ill health of other than self	
		Unable to find suitable child care	
		Children too young or preferred to look after children	
		On a job-related training program	
		Other reasons	

APPENDIX 1 POPULATIONS AND DATA ITEMS LIST *continued*

<i>Data items</i>	<i>Populations</i>	<i>Data items</i>	<i>Populations</i>
24 Age of youngest child	7	25 Number of children	7
0-2 years		Aged 0-2 years	
3-4 years		Aged 3-4 years	
5 years		Aged 5 years	
6-9 years		Aged 6-9 years	
10-12 years		Aged 10-12 years	

APPENDIX 2 SUPPLEMENTARY SURVEYS LIST

SUPPLEMENTARY SURVEYS

The Monthly Population Survey program collects data on particular aspects of the labour force. The following is an historical list of supplementary surveys to the monthly labour force survey. Data from these surveys are available on request and can be obtained by contacting the ABS.

	<i>cat. no.</i>	<i>Frequency</i>	<i>Latest issue</i>
Barriers and Incentives to Labour Force Participation, Australia	6239.0	Biennial	2004–2005
Career Experience, Australia	6254.0	Discontinued	Final issue 2002
Career Paths of Persons with Trade Qualifications, Australia	6243.0	Discontinued	Final issue 1993
Child Care, Australia	4402.0	Irregular	June 2005
Child Employment, Australia	6211.0	Irregular	June 2006
Education and Work, Australia	6227.0	Annual	May 2006
Employee Earnings, Benefits, and Trade Union Membership, Australia	6310.0	Annual	August 2006
Forms of Employment, Australia	6359.0	Irregular	November 2004
Job Search Experience, Australia	6222.0	Annual	July 2006
Labour Force Experience, Australia	6206.0	Biennial	February 2005
Labour Force Status and Educational Attainment, Australia	6235.0	Discontinued	Final issue 1994
Labour Force Status and Other Characteristics of Families, Australia(a)	6224.0	Discontinued	Final issue 2000
Labour Force Status and Other Characteristics of Migrants, Australia	6250.0	Irregular	November 2004
Labour Mobility, Australia	6209.0	Biennial	February 2006
Locations of Work, Australia	6275.0	Irregular	November 2005
Multiple Jobholding, Australia(b)	6216.0	Irregular	August 1997
Participation in Education, Australia	6272.0	Discontinued	Final issue 1999
Persons Not in the Labour Force, Australia	6220.0	Annual	September 2005
Persons Who had Re-entered the Labour Force, Australia	6264.0.40.001	Discontinued	Final issue 1995
Persons Who Have Left the Labour Force, Australia	6267.0.40.001	Discontinued	Final issue 1994
Retirement and Retirement Intentions, Australia	6238.0	Biennial	2004–2005
Retrenchment and Redundancy, Australia	6266.0	Discontinued	Final issue 2001
Successful and Unsuccessful Job Search Experience, Australia	6245.0	Discontinued	Final issue 2000
Superannuation, Australia	6319.0	Discontinued	Final issue 1995
Underemployed Workers, Australia	6265.0	Annual	September 2006
Working Arrangements, Australia	6342.0	Irregular	November 2003
Work-Related Injuries, Australia	6324.0	Irregular	2005–06

(a) Latest data available June 2006, from the ABS web site cat. no. 6224.0.55.001 annual, or on request.

(b) Latest data available on request July 2001.

INTRODUCTION

1 Since the estimates in this publication are based on information obtained from occupants of a sample of dwellings, they are subject to sampling variability. That is, they may differ from those estimates that would have been produced if all dwellings had been included in the survey. One measure of the likely difference is given by the standard error (SE), which indicates the extent to which an estimate might have varied by chance because only a sample of dwellings was included. There are about two chances in three (67%) that a sample estimate will differ by less than one SE from the number that would have been obtained if all dwellings had been included, and about 19 chances in 20 (95%) that the difference will be less than two SEs. Another measure of the likely difference is the relative standard error (RSE), which is obtained by expressing the SE as a percentage of the estimate.

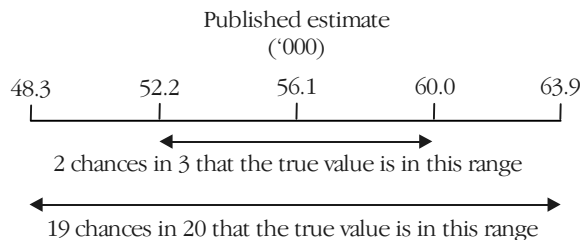
2 Due to space limitations, it is impractical to print the SE of each estimate in the publication. Instead, a table of SEs is provided to enable readers to determine the SE for an estimate from the size of that estimate (see table T1). The SE table is derived from a mathematical model, referred to as the 'SE model', which is created using data from a number of past Labour Force Surveys. It should be noted that the SE model only gives an approximate value for the SE for any particular estimate, since there is some minor variation between SEs for different estimates of the same size.

CALCULATION OF STANDARD ERRORS

3 An example of the calculation and the use of SEs in relation to estimates of people is as follows. Table 2 shows that the estimated number of people in Australia who were discouraged job seekers was 56,100. Since this estimate is between 50,000 and 100,000, table T1 shows the SE for Australia will be between 3,750 and 4,800, and can be approximated by interpolation using the following general formula:

$$\begin{aligned}
 & SE \text{ of estimate} \\
 &= \text{lower SE} + \left(\left(\frac{\text{size of estimate} - \text{lower estimate}}{\text{upper estimate} - \text{lower estimate}} \right) \times (\text{upper SE} - \text{lower SE}) \right) \\
 &= 3,750 + \left(\left(\frac{56,100 - 50,000}{100,000 - 50,000} \right) \times (4,800 - 3,750) \right) \\
 &= 3,900 \text{ (rounded to the nearest 100)}
 \end{aligned}$$

4 Therefore, there are about two chances in three that the value that would have been produced if all dwellings had been included in the survey will fall in the range 52,200 to 60,000, and about 19 chances in 20 that the value will fall within the range 48,300 to 63,900. This example is illustrated in the diagram below.



5 In general, the size of the SE increases as the size of the estimate increases. Conversely, the RSE decreases as the size of the estimate increases. Very small estimates are thus subject to such high RSEs that their value for most practical purposes is unreliable. In the tables in this publication, only estimates with RSEs of 25% or less are considered reliable for most purposes. Estimates with RSEs greater than 25% but less than or equal to 50% are preceded by an asterisk (e.g.*3.4) to indicate they are subject to high SEs and should be used with caution. Estimates with RSEs of greater than 50%, preceded by a double asterisk (e.g.**0.3), are considered too unreliable for general use

CALCULATION OF STANDARD ERRORS *continued*

and should only be used to aggregate with other estimates to provide derived estimates with RSEs of 25% or less.

PROPORTIONS AND PERCENT AGES

6 Proportions and percentages formed from the ratio of two estimates are also subject to sampling errors. The size of the error depends on the accuracy of both the numerator and the denominator. A formula to approximate the RSE of a proportion is given below. This formula is only valid when x is a subset of y.

$$RSE\left(\frac{x}{y}\right) = \sqrt{[RSE(x)]^2 - [RSE(y)]^2}$$

7 Considering the example above, of the 56,100 people in Australia who were discouraged job seekers, 20,400 or 36.4% were males. The SE of 20,400 may be calculated by interpolation as 2,600. To convert this to an RSE we express the SE as a percentage of the estimate, or $2,600/20,400 = 12.8\%$. The SE for 56,100 was calculated previously as 3,900, which converted to an RSE is $3,900/56,100 = 7.0\%$. Applying the above formula, the RSE of the proportion is

$$RSE = \sqrt{(12.8)^2 - (7.0)^2} = 10.7\%$$

8 Therefore, the SE for the proportion of discouraged job seekers who were male is 3.9 percentage points ($= (36.4/100) \times 10.7$). Therefore, there are about two chances in three that the proportion of males who were discouraged job seekers is between 32.5% and 40.3% and 19 chances in 20 that the proportion is within the range 28.6% to 44.2%.

DIFFERENCES

9 Published estimates may also be used to calculate the difference between two survey estimates (of numbers or percentages). Such an estimate is subject to sampling error. The sampling error of the difference between two estimates depends on their SEs and the relationship (correlation) between them. An approximate SE of the difference between two estimates (x-y) may be calculated by the following formula:

$$SE(x - y) = \sqrt{[SE(x)]^2 + [SE(y)]^2}$$

10 While this formula will only be exact for differences between separate and uncorrelated characteristics or subpopulations, it is expected to provide a good approximation for all differences likely to be of interest in this publication.

11 SEs contained in table T1 are applicable to all estimates from this survey.

TECHNICAL NOTE DATA QUALITY *continued*

STANDARD ERRORS

T1 STANDARD ERRORS OF ESTIMATES

Size of estimate (persons)	NSW	Vic.	Qld	SA	WA	Tas.	NT	ACT	Aust.	
									SE	RSE
	no.	no.	no.	no.	no.	no.	no.	no.	no.	%
100	120	170	160	100	120	100	120	90	120	120.0
200	210	260	240	170	190	150	160	140	200	100.0
300	280	330	300	220	240	190	200	180	260	86.7
500	400	430	400	300	330	240	250	230	370	74.0
700	500	520	480	360	400	280	290	270	450	64.3
1000	630	620	580	430	480	320	350	320	560	56.0
1500	800	750	710	530	590	380	430	370	710	47.3
2000	930	870	820	600	670	420	500	410	830	41.5
2500	1 050	950	900	650	750	450	550	450	950	38.0
3000	1 150	1 050	1 000	700	800	450	600	450	1 050	35.0
3500	1 250	1 100	1 050	750	850	500	700	500	1 150	32.9
4000	1 350	1 200	1 150	800	900	500	750	500	1 200	30.0
5000	1 500	1 300	1 250	850	1 000	550	850	550	1 350	27.0
7000	1 700	1 500	1 450	950	1 100	650	1 100	650	1 600	22.9
10000	2 000	1 750	1 650	1 150	1 250	850	1 450	800	1 900	19.0
15000	2 350	2 050	1 950	1 350	1 450	1 050	2 050	1 050	2 300	15.3
20000	2 600	2 250	2 150	1 550	1 650	1 300	2 600	1 250	2 600	13.0
30000	3 000	2 650	2 500	1 850	2 100	1 600	3 550	1 550	3 050	10.2
40000	3 350	2 900	2 800	2 150	2 550	1 850	4 400	1 750	3 450	8.6
50000	3 700	3 200	3 100	2 450	2 900	2 100	5 200	1 900	3 750	7.5
100000	5 150	4 650	4 700	3 550	4 300	2 950	8 400	2 350	4 800	4.8
150000	6 400	5 950	6 150	4 400	5 350	3 500	10 900	2 500	5 600	3.7
200000	7 550	7 050	7 300	5 050	6 150	3 900	6 350	3.2
300000	9 700	8 800	9 050	6 000	7 450	4 550	7 800	2.6
500000	13 250	11 500	11 300	7 150	9 300	5 350	10 550	2.1
1000000	18 800	16 000	14 000	8 450	12 150	16 600	1.7
2000000	24 450	21 600	15 650	9 300	15 250	24 250	1.2
5000000	30 400	30 450	15 550	35 250	0.7
10000000	32 450	37 950	42 450	0.4
15000000	45 550	0.3

.. not applicable

T2 LEVELS AT WHICH ESTIMATES HAVE RELATIVE STANDARD ERRORS OF 25% AND 50% (a)

	NSW	Vic.	Qld	SA	WA	Tas.	NT	ACT	Aust.
	no.	no.	no.	no.	no.	no.	no.	no.	no.
RSE of 25%	6 800	5 400	5 000	2 700	3 400	1 500	2 000	1 500	5 900
RSE of 50%	1 700	1 500	1 400	700	900	500	500	400	1 300

(a) Refers to the number of people contributing to the estimate.

GLOSSARY

Actively looking for work	People who were taking active steps to find work. Active steps comprise: <ul style="list-style-type: none">■ registering with a Job Network employment agency■ contacting an employment agency■ contacting prospective employers■ answering a newspaper advertisement for a job■ checking Centrelink touch screens■ checking factory noticeboards■ advertising or tendering for work■ contacting friends or relatives.
Age of youngest child	Age of the youngest child under 13 years old in the household.
Available to start work within four weeks	People who were available to start work within four weeks or, for people with children aged 12 years and under, could start work within four weeks if suitable child care was available.
Did not want to work	People who were not classified as employed or unemployed who: <ul style="list-style-type: none">■ answered 'no' when asked if they would like a job; or■ were aged 65 years and over and said that they were 'permanently not intending to work'.
Discouraged job seekers	People with marginal attachment to the labour force who wanted to work and were available to start work within the next four weeks but whose main reason for not actively looking for work was that they believed they would not find a job for any of the following reasons: <ul style="list-style-type: none">■ considered to be too young by employers■ considered to be too old by employers■ lacked necessary schooling, training, skills or experience■ difficulties because of language or ethnic background■ no jobs in their locality or line of work■ no jobs at all.
Employed	People who, during the reference week: <ul style="list-style-type: none">■ worked for one hour or more for pay, profit, commission or payment in kind in a job or business, or on a farm (comprising employees, employers and own account workers); or■ worked for one hour or more without pay in a family business or on a farm (i.e. contributing family workers); or■ were employees who had a job but were not at work and were:<ul style="list-style-type: none">■ away from work for less than four weeks up to the end of the reference week; or■ away from work for more than four weeks up to the end of the reference week and received pay for some or all of the four week period to the end of the reference week; or■ away from work as a standard work or shift arrangement; or■ on strike or locked out; or■ on workers' compensation and expected to return to their job; or■ were employers or own account workers who had a job, business or farm, but were not at work.
Family	Two or more people, one of whom is at least 15 years of age, who are related by blood, marriage (registered or de facto), adoption, step or fostering; and who are usually resident in the same household. The basis of a family is formed by identifying the presence of a couple relationship, lone parent-child relationship or other blood relationship. Some households will, therefore, contain more than one family.
Family reasons for not actively looking for work	Includes ill health of a family member, caring for children and other family considerations.
Full-time or part-time	A person's perception of whether they would prefer to work full-time or part-time

GLOSSARY *continued*

preference	when/if they go to work, regardless of whether they are able to start work.
Full-time status in last job	Worked 35 or more hours a week in last job.
Future starters	People waiting to start, within four weeks of the end of the reference week, a new job that they have already obtained (and could have started in the reference week if the job had been available then). Under International Labour Organisation (ILO) guidelines these persons do not have to be actively looking for work to be classified as unemployed.
Had a job to go to	Includes people who had a job but, up to the end of the reference week, had been away from work without pay for four weeks or longer and had not been actively looking for work.
Intention to enter the labour force in the next 12 months	A person's intention to work or look for work in the 12 months following the interview.
Job	Any employment, full-time or part-time, lasting two weeks or more.
Job leavers	People who voluntarily ceased their last job.
Job losers	People who involuntarily ceased their last job.
Labour force	The civilian population can be split into two mutually exclusive groups: the labour force (employed and unemployed people) and persons not in the labour force.
Main activity when not in the labour force	The main activity of people who are not in the labour force since they last worked or looked for work (or in the last year if they haven't worked in that time).
Marginal attachment to the labour force	<p>People who were not in the labour force in the reference week, wanted to work and:</p> <ul style="list-style-type: none">■ were actively looking for work but did not meet the availability criteria to be classified as unemployed; or■ were not actively looking for work but were available to start work within four weeks¹. <p>The criteria for determining those in the labour force are based on activity (i.e. working or looking for work) and availability to start work during the reference week. The criteria associated with marginal attachment to the labour force, in particular the concepts of wanting to work and reasons for not actively looking for work, are more subjective. Hence, the measurement against these criteria is affected by the respondent's own interpretation of the concepts used. An individual respondent's interpretation may be affected by their work aspirations, as well as family, economic and other commitments.</p>
Main English-speaking countries	<p>The list of main English-speaking countries provided here in this publication is not an attempt to classify countries on the basis of whether or not English is the predominant or official language of each country. It is a list of the main countries from which Australia receives, or has received, significant numbers of overseas settlers who are likely to speak English. The list therefore includes South Africa. Although large numbers of South Africans do not speak English as their first language, those who migrate to Australia are likely to speak English. The list does not include country units which are statistically insignificant in the Australian context, although they are English speaking countries.</p> <p>The set of main English-speaking countries used by the ABS consists of:</p> <ul style="list-style-type: none">■ Australia■ Canada■ Ireland, Republic of■ New Zealand■ South Africa■ United Kingdom<ul style="list-style-type: none">■ England■ Scotland■ Wales■ Northern Ireland■ United States of America.

¹ See 'Available to start work within four weeks' in Glossary.

GLOSSARY *continued*

Occupation in last job	All occurrences of occupation in this publication refer to Major Group as defined by ANZSCO— <i>Australian and New Zealand Standard Classification of Occupations, First Edition, 2006</i> (cat. no. 1220.0). Includes persons who have had a job less than 20 years ago only. See paragraphs 19 to 21 of the Explanatory Notes for more information.
Part-time status in last job	Worked less than 35 hours a week in last job.
Permanently not intending to work	People who said that they were permanently not intending to work.
Personal reasons for not actively looking for work	Includes own ill health or physical disability, pregnancy, attending an educational institution, had no need to work, welfare payments or pension may be affected, moved house or on holidays.
Persons in the labour force	People who were classified as being in the labour force, that is, either employed or unemployed.
Persons not in the labour force	People who were not in the categories 'employed' or 'unemployed' as defined.
Persons not in the labour force because they were caring for children	People who wanted to work and: <ul style="list-style-type: none">■ were not actively looking for work because they were caring for children, but were available to start work within four weeks; or■ were not actively looking for work and reported that they were not available to start work within four weeks because they were caring for children.
Reference week	The week preceding the week in which the interview was conducted.
Status in employment in last job	People who were employed classified by whether they were employees, employers, own account workers or contributing family workers in their last job.
Time since last job	The elapsed time since ceasing last job.
Unemployed	People aged 15 years and over who were not employed during the reference week, and: <ul style="list-style-type: none">■ had actively looked for full-time or part-time work at any time in the four weeks up to the end of the reference week and were available for work in the reference week; or■ were waiting to start a new job within four weeks from the end of the reference week and could have started in the reference week if the job had been available then.
Wanted to work	People who were not classified as employed or unemployed and who answered 'yes' or 'maybe' when asked if they would like a job.

FOR MORE INFORMATION . . .

INTERNET **www.abs.gov.au** the ABS web site is the best place for data from our publications and information about the ABS.

LIBRARY A range of ABS publications are available from public and tertiary libraries Australia wide. Contact your nearest library to determine whether it has the ABS statistics you require, or visit our web site for a list of libraries.

INFORMATION AND REFERRAL SERVICE

Our consultants can help you access the full range of information published by the ABS that is available free of charge from our web site, or purchase a hard copy publication. Information tailored to your needs can also be requested as a 'user pays' service. Specialists are on hand to help you with analytical or methodological advice.

PHONE 1300 135 070

EMAIL client.services@abs.gov.au

FAX 1300 135 211

POST Client Services, ABS, GPO Box 796, Sydney NSW 2001

FREE ACCESS TO STATISTICS

All statistics on the ABS web site can be downloaded free of charge.

WEB ADDRESS www.abs.gov.au



2622000009074

ISSN 0819 9914

RRP \$27.00